



Dutch<sup>®</sup>  Housing

# MULTI SECTION HOMES

More  
Home for  
the Money

ALL PLANS AVAILABLE IN MODULAR SPECIFICATIONS





# About us

## A place to call your own

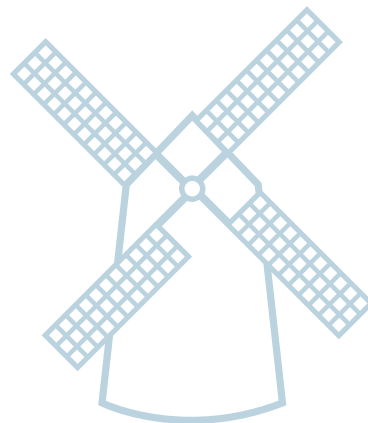
Beyond just building you a house, we're committed to providing you and your family with a home to make memories in that will last a lifetime. Somewhere you can feel secure. A place you can call your own. A home that fits your lifestyle and has your own personal touch. Whether you're an active young family constantly on the go or empty-nesters ready to simplify, just relax – we have a home that's right for you.

## More choice, more freedom

Our vast selection of floor plans, color choices and options give you the design choices you want to create a home you'll truly enjoy. Using our online Kitchen Designer, it's easy to create the kitchen of your dreams.

## Confidence and trust

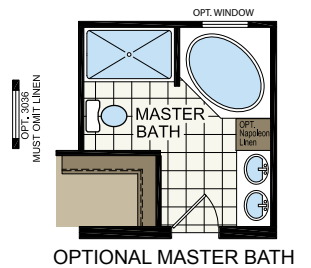
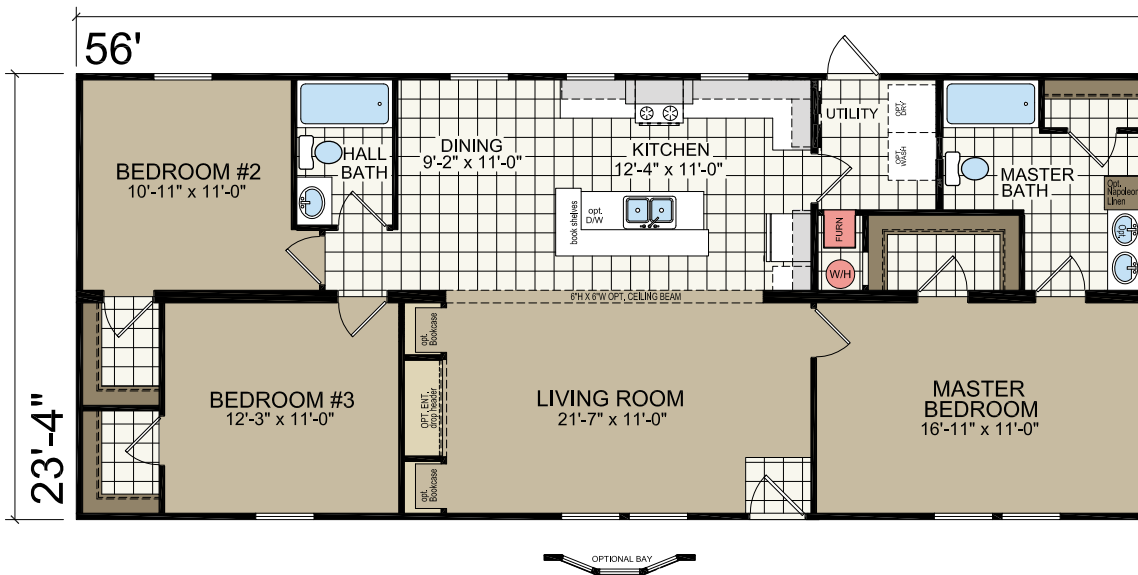
Over the years, we've built more than just homes. We've built homebuyer trust in our ability to satisfy their needs and we're confident we can provide you with a home that will meet your needs and exceed your expectations.



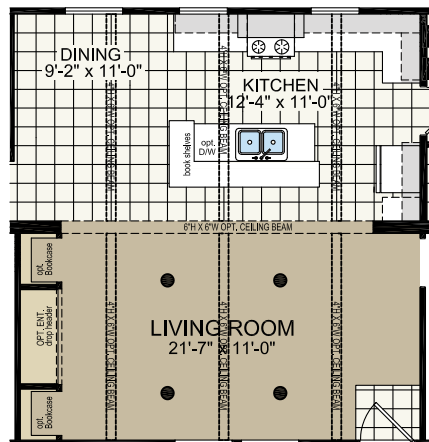
# HANOVER

Model 2456

23'-4" x 56'  
3 bed-2 bath  
1307 sq. ft.



OPTIONAL CEILING BEAMS & RECESSED LIGHTING  
IN LIVING ROOM/DINING ROOM-KITCHEN



VIDEO TOUR:





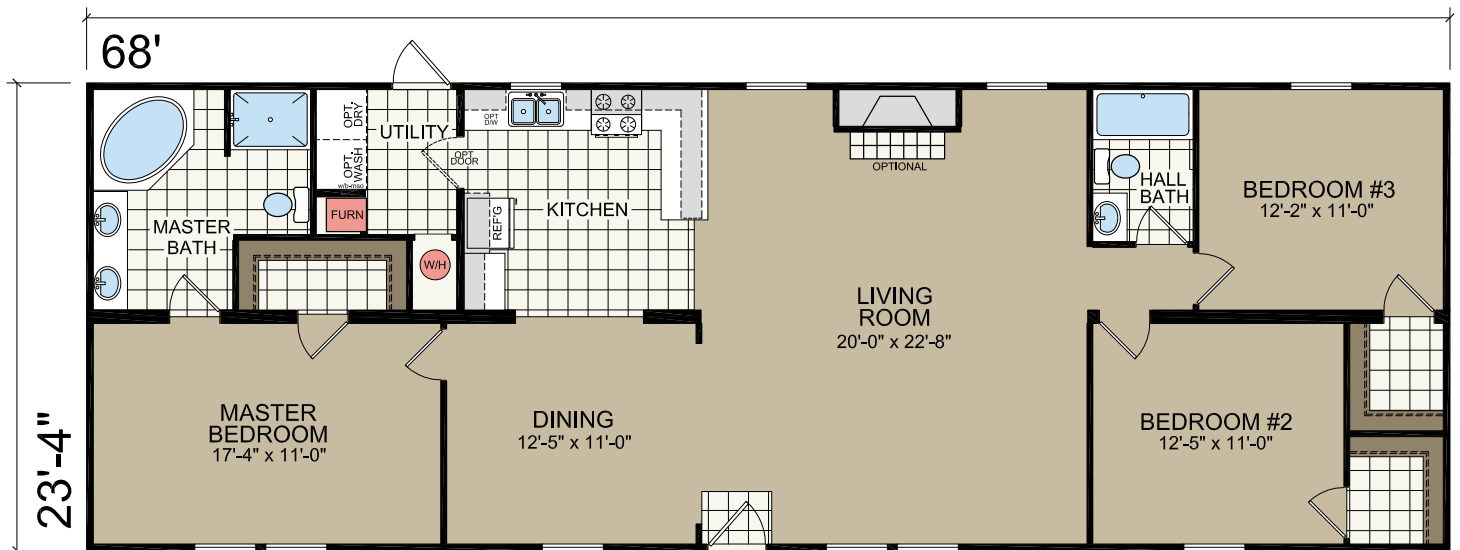
# NASHVILLE

Model 2468

23'-4" x 68'  
3 bed-2 bath  
1586 sq. ft.



*Steps and Handrails by others*



# PIEDMONT

## Model 2945

26'-8" x 44'  
3 bed-2 bath  
1173 sq. ft.



*Shown with Optional Site-built Porch by Others*





# MARION

Model 352

26'-8" x 52'  
3 bed-2 bath  
1387 sq. ft.



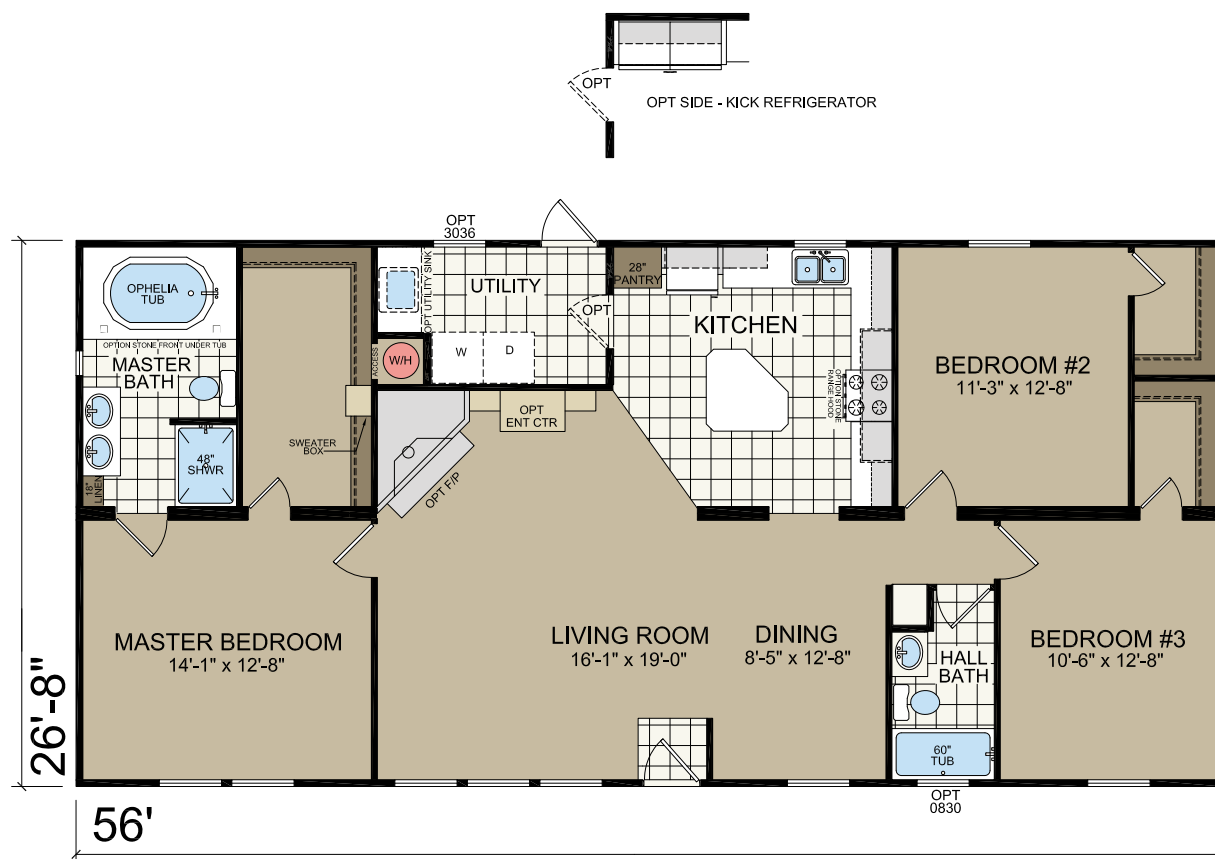
# SALUDA

Model 527

26'-8" x 56'  
3 bed-2 bath  
1493 sq. ft.



Steps and Handrails by Others

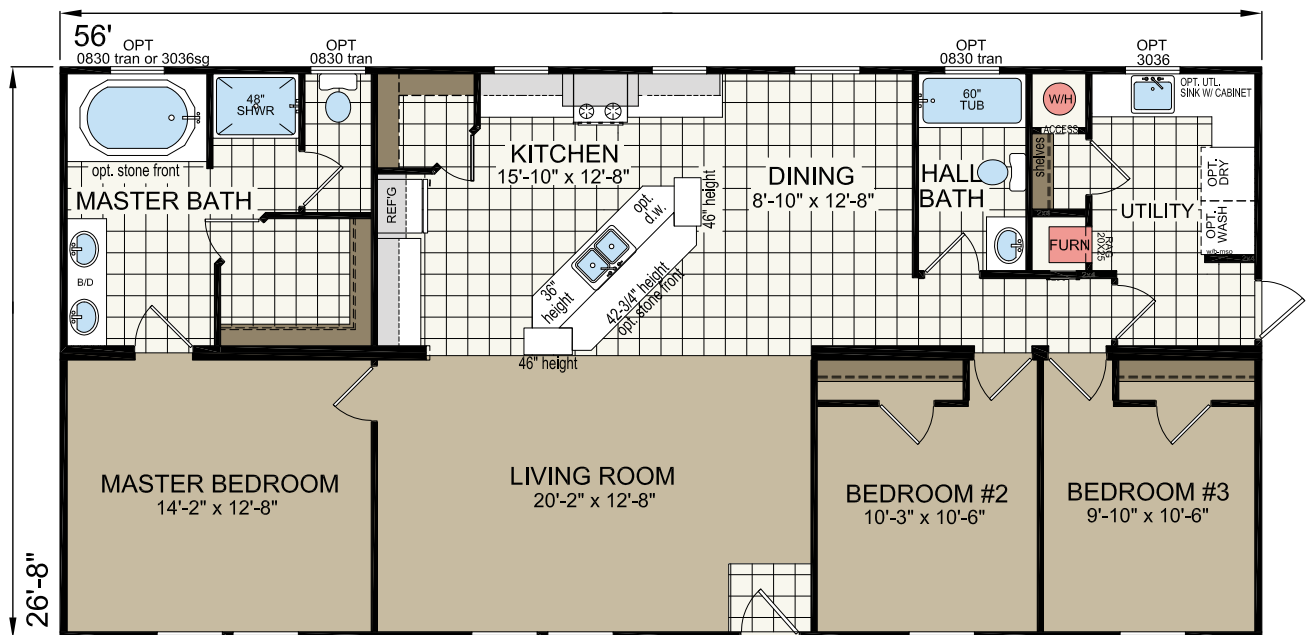




# GREENWOOD

Model 2955

26'-8" x 56'  
3 bed-2 bath  
1493 sq. ft.



OPT. 9460 PICTURE WINDOW

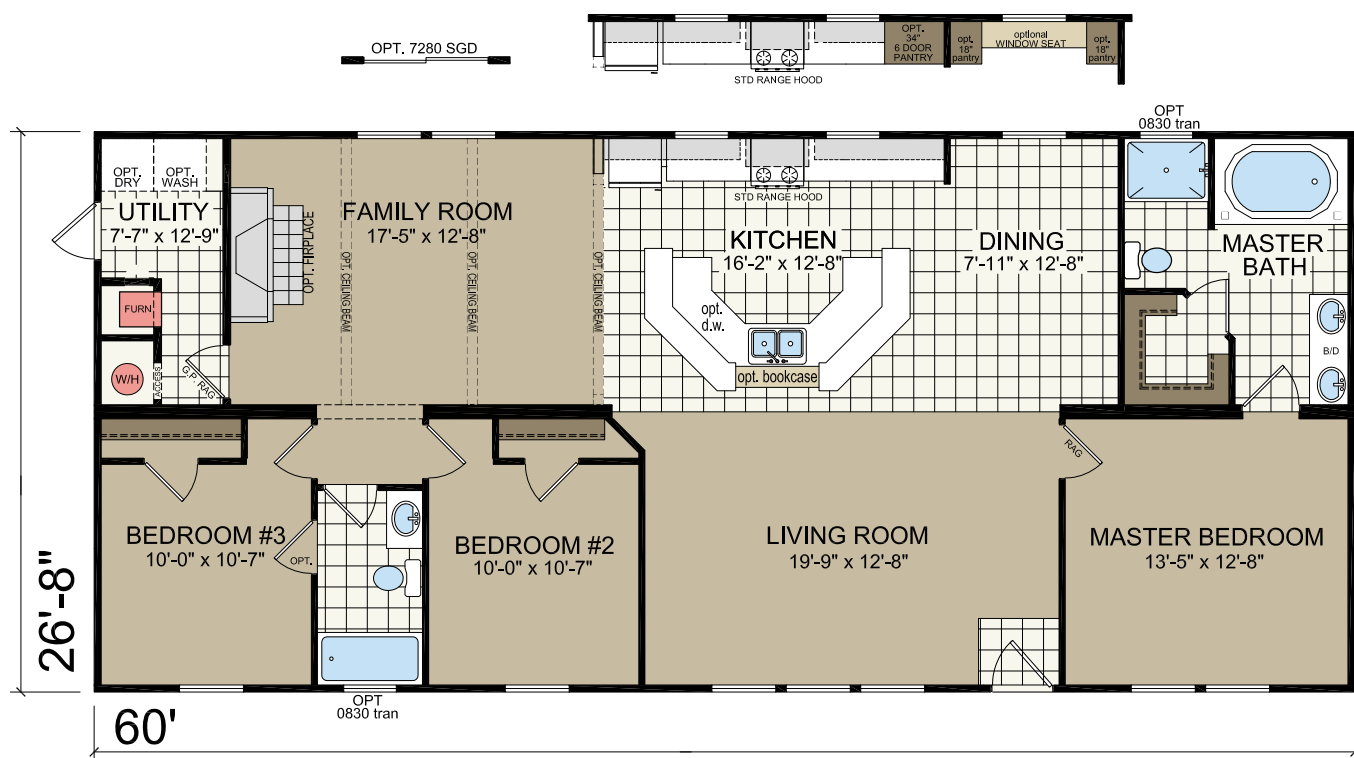
# ASHLEY

## Model 2963

26'-8" x 60'  
3 bed-2 bath  
1600 sq. ft.



*Steps and Handrails by Others*





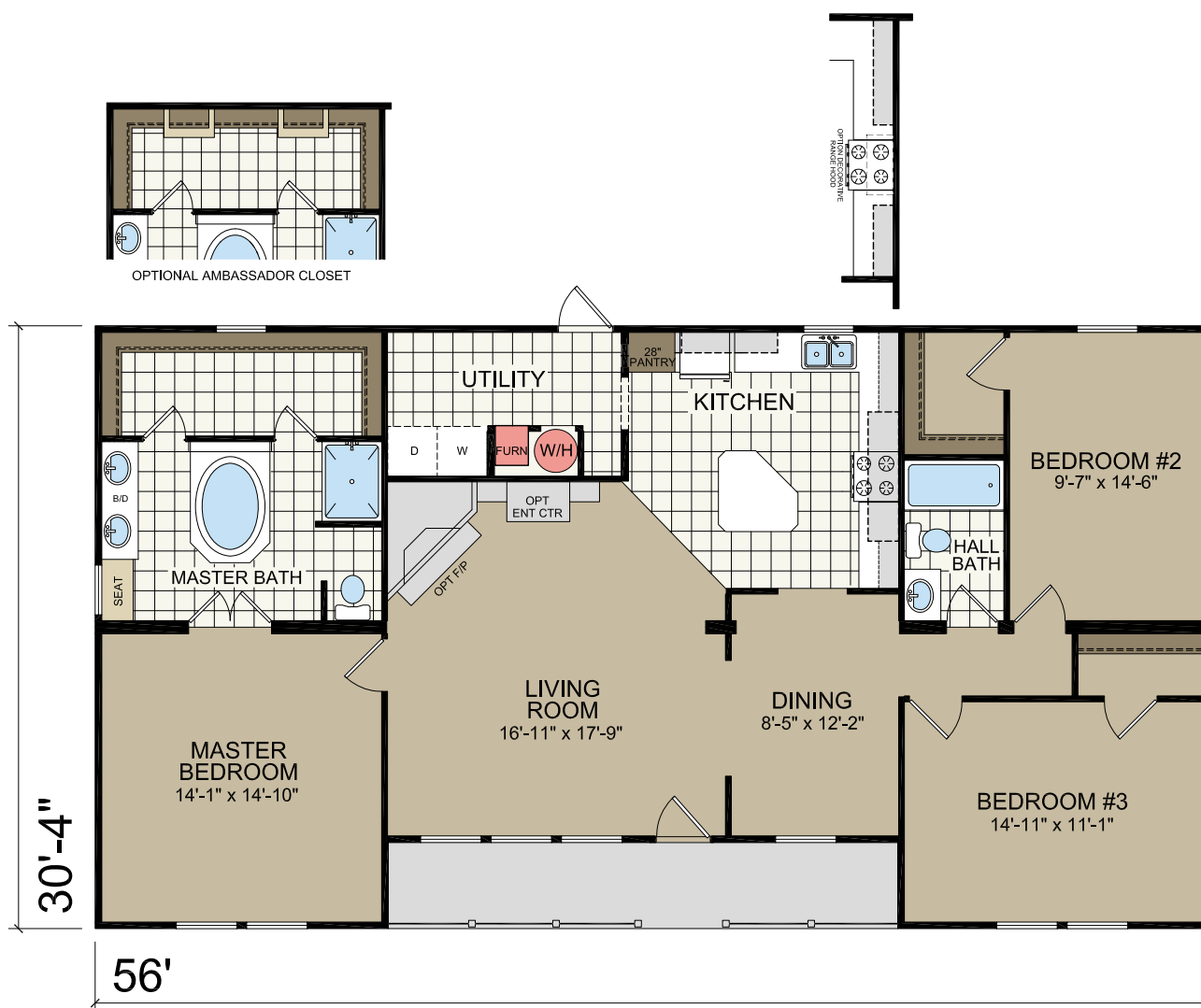
# LAWSON

Model 3256

30'-4" x 56'  
3 bed-2 bath  
1588 sq. ft.



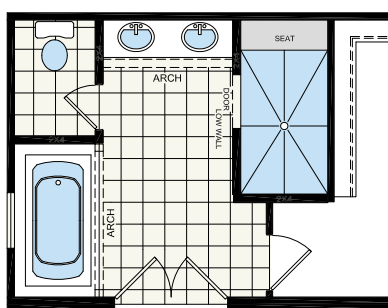
*Steps and Handrails by Others*



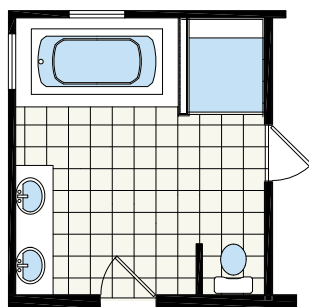
**26'-8" x 64'**  
**3 bed-2 bath**  
**1706 sq. ft.**



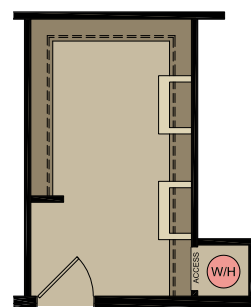
## Steps and Handrails by Others



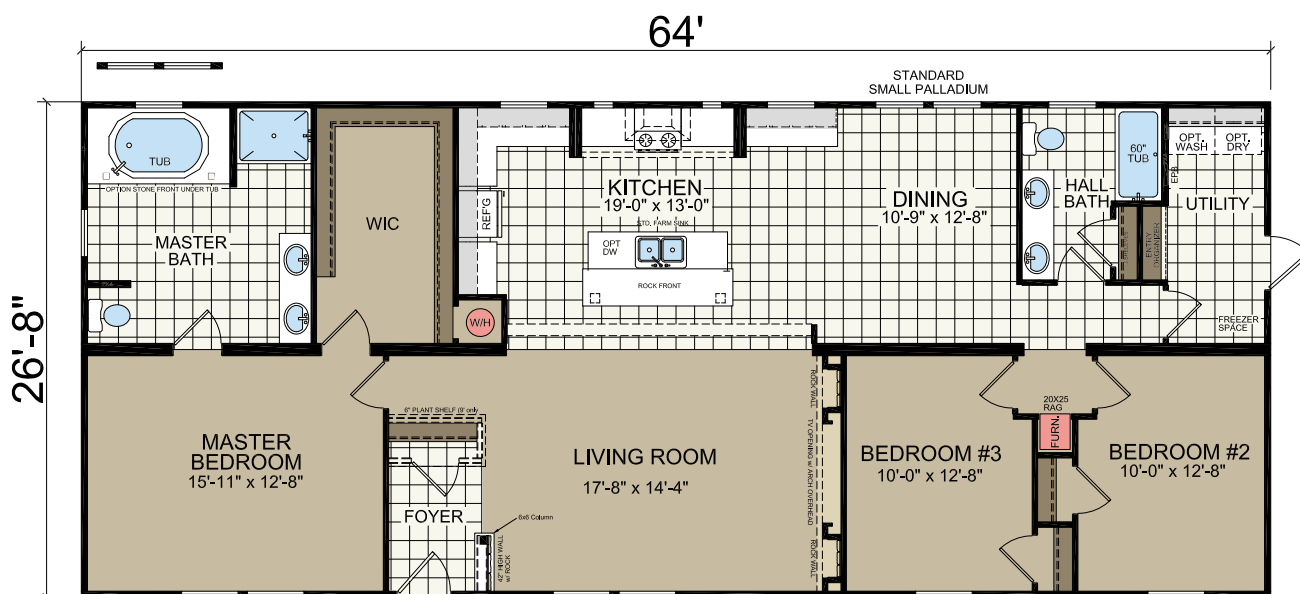
OPT AMAZON BATH



OPT. SILHOUETTE BATH



AMBASSADOR CLOSET



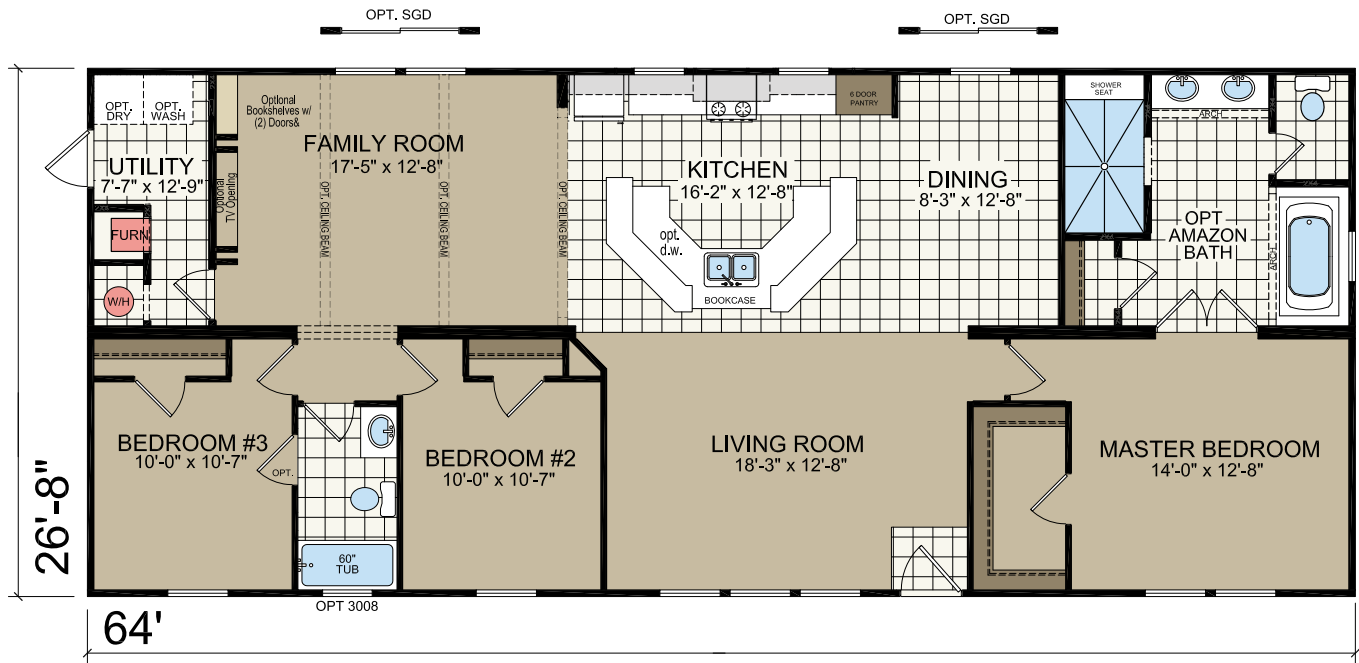




# BERLIN

Model 2864-01

26'-8" x 64'  
3 bed-2 bath  
1706 sq. ft.

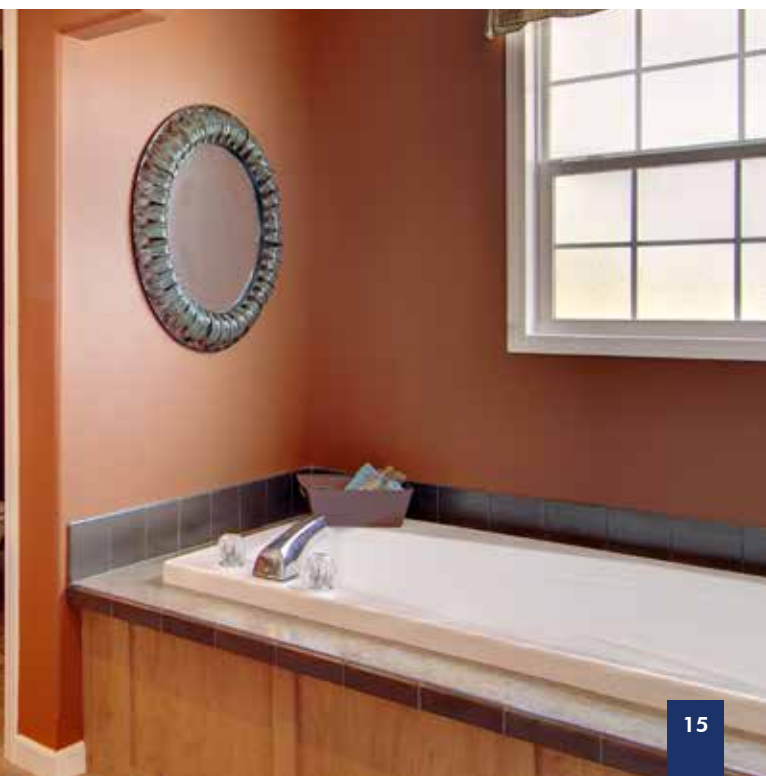


OPT. CEILING BEAMS IN FAMILY ROOM

VIDEO TOUR:









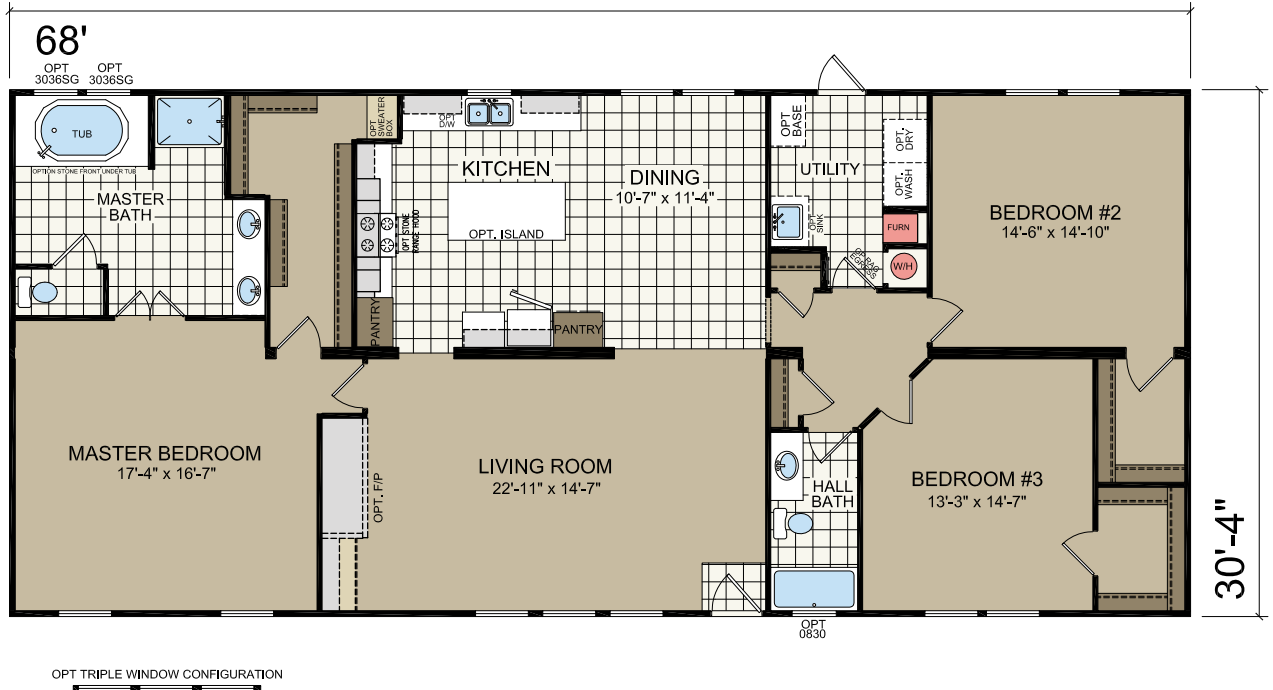
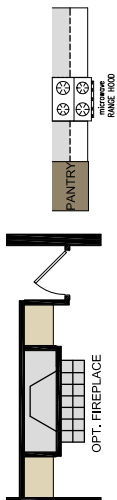
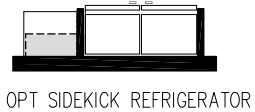
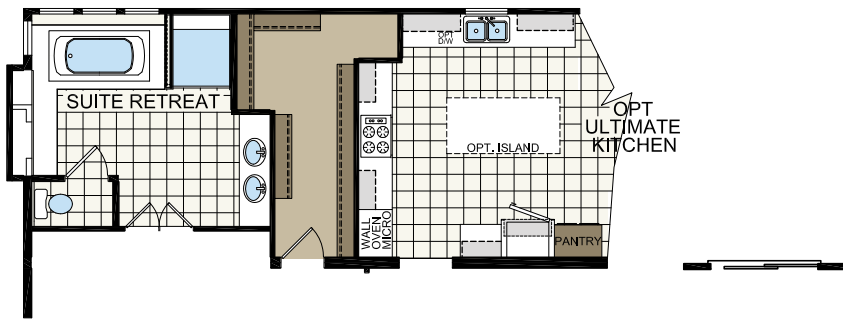
# SHENANDOAH

Model 3268

30'-4" x 68'  
3 bed-2 bath  
2062 sq. ft.



Steps and Handrails by Others

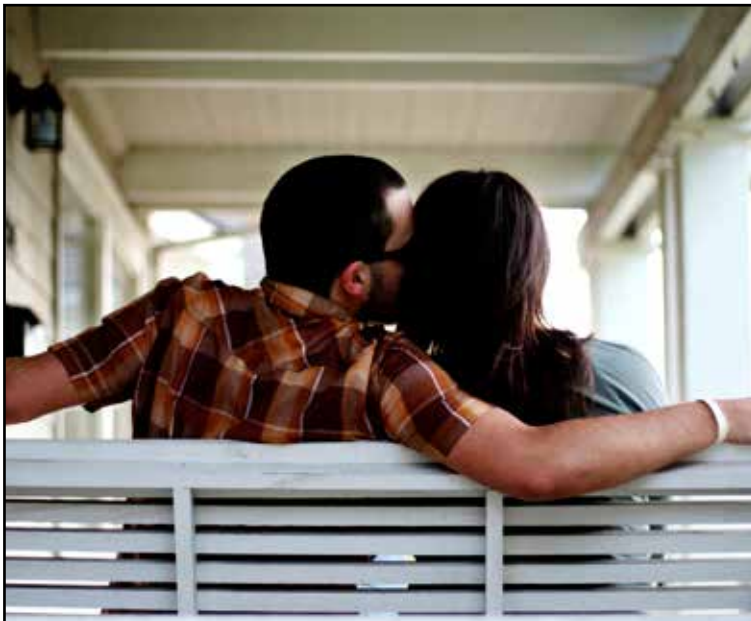
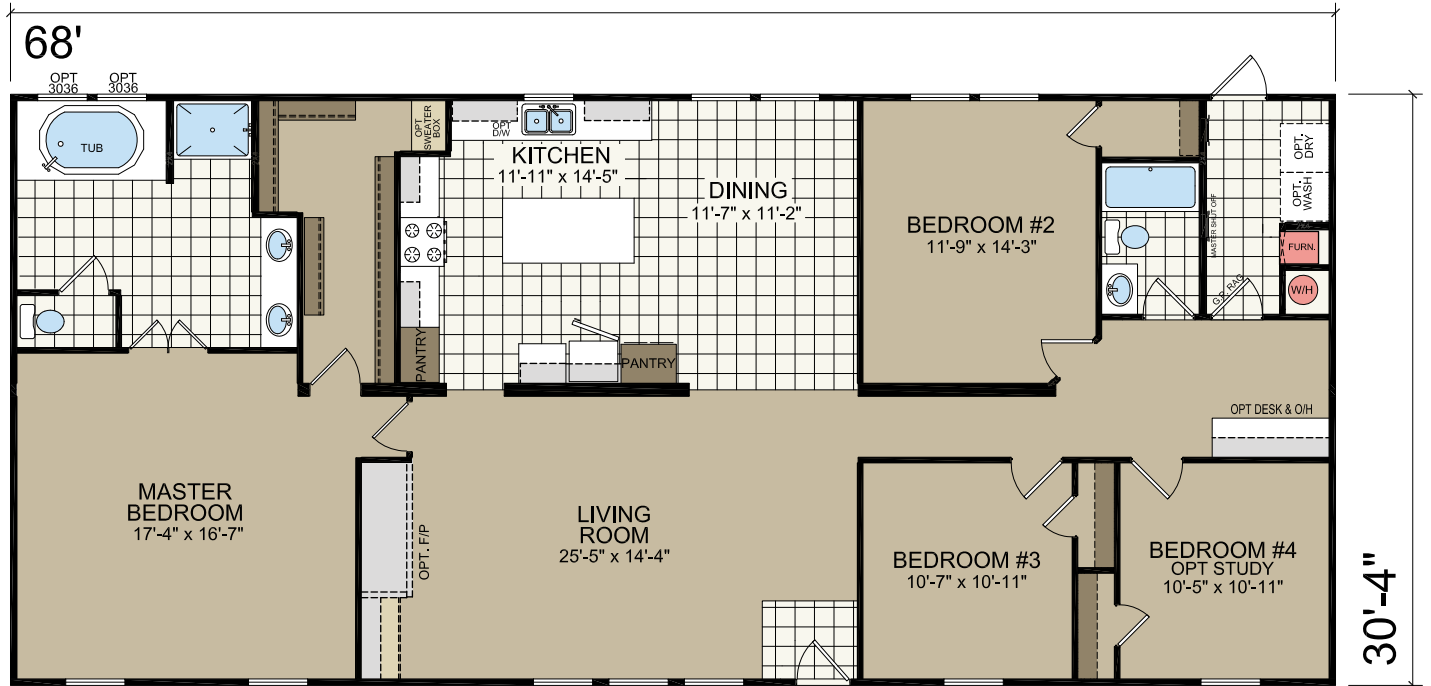




# HAMPSTEAD

Model 3268A

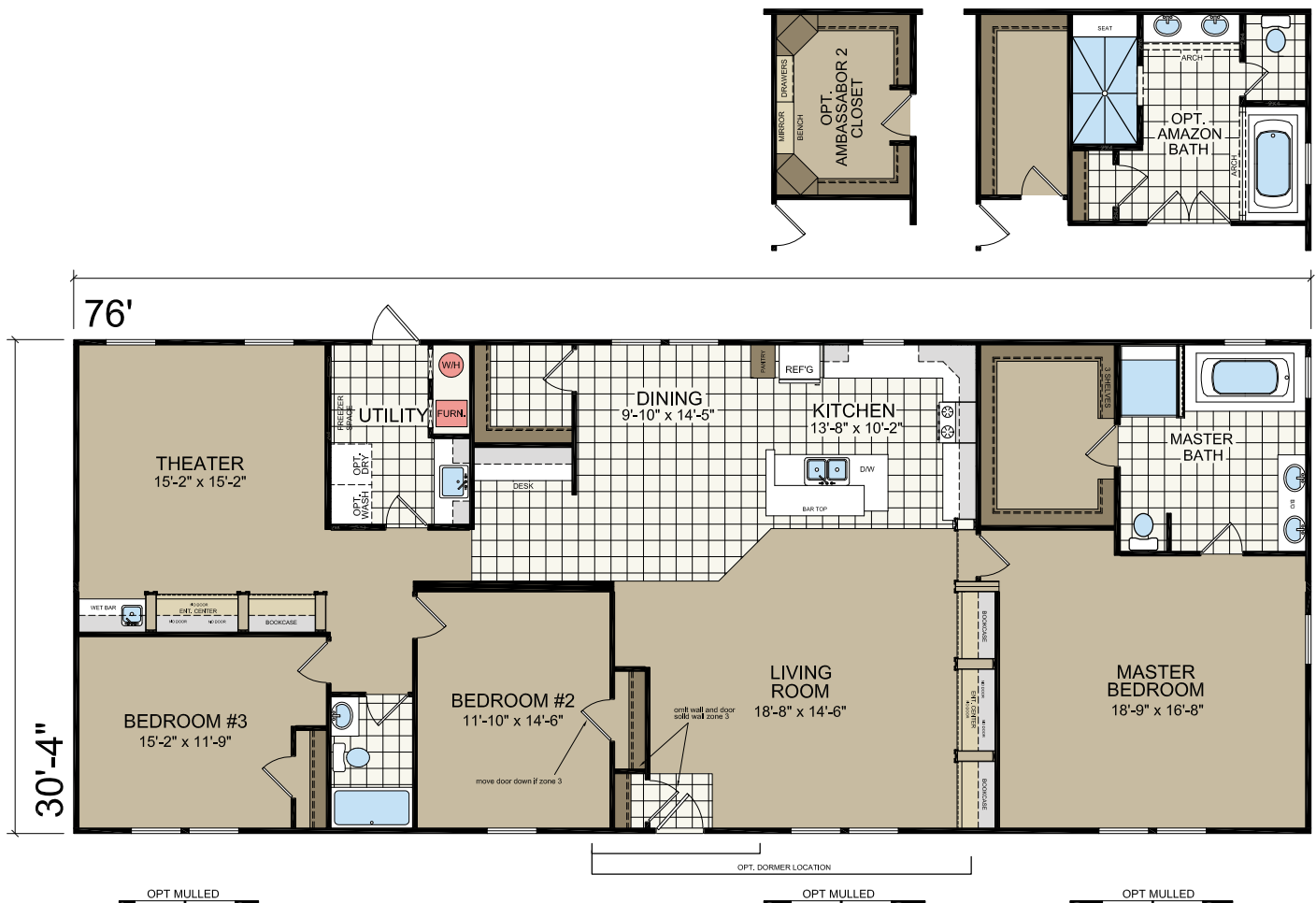
30'-4" x 68'  
4 bed-2 bath  
2062 sq. ft.



# BUNGALOW

Model 3276-08

30'-4" x 76'  
3 bed-2 bath  
2305 sq. ft.









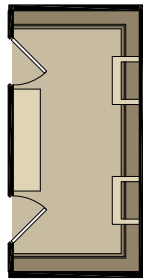
# HARTWELL

Model 3977

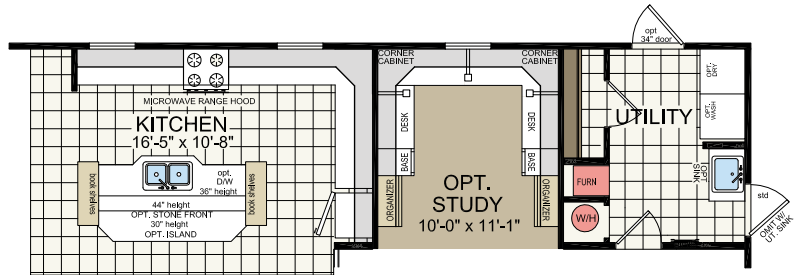
30'-4" x 76'  
4 bed-2 bath  
2305 sq. ft.



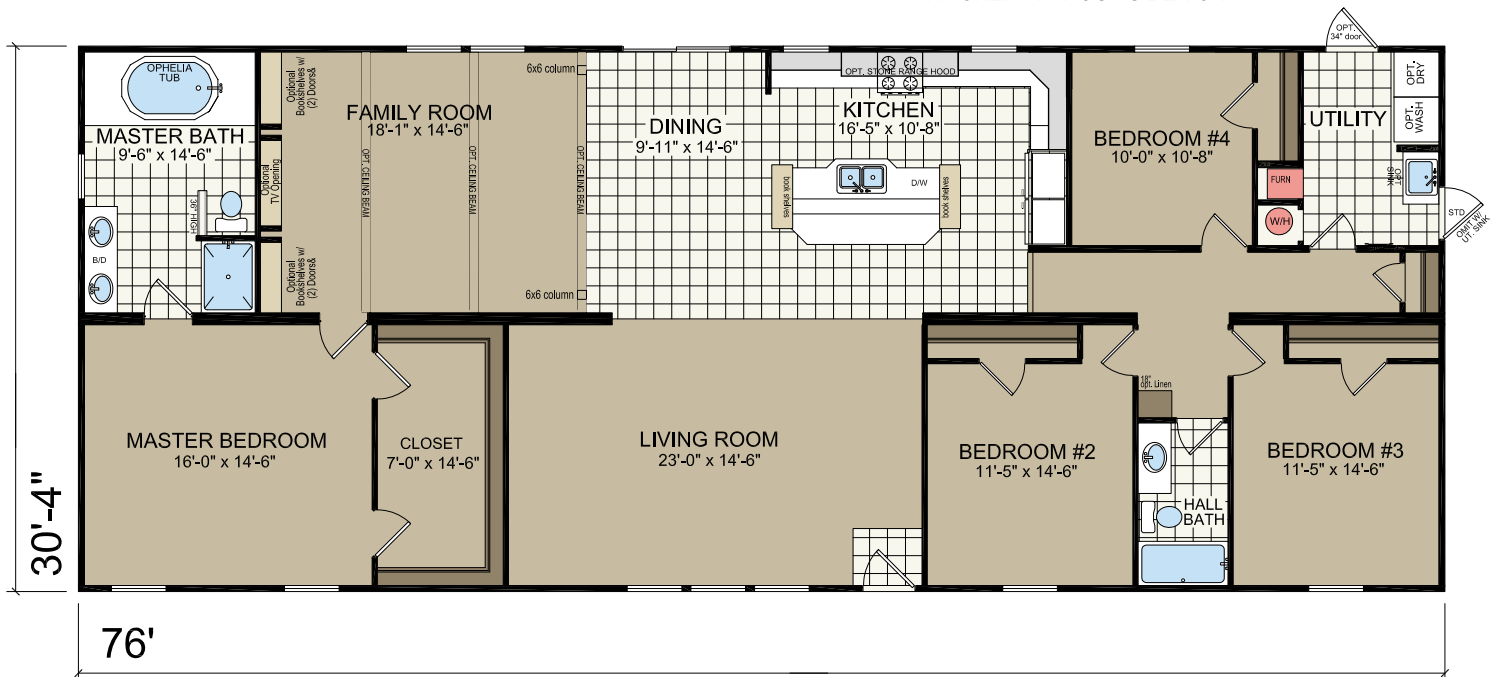
## VIDEO TOUR:



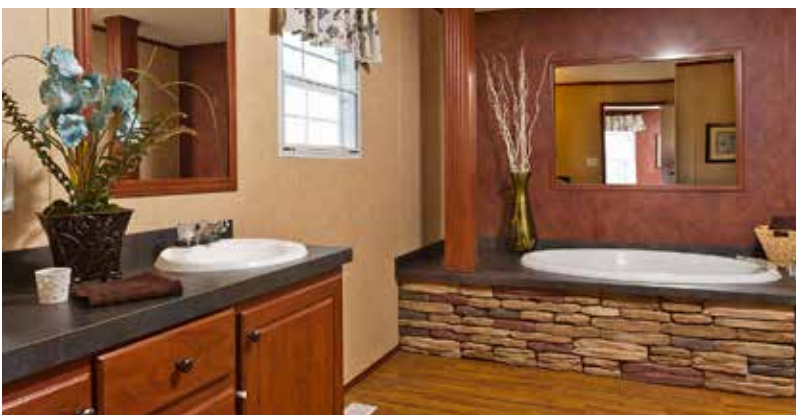
OPT. DREAM CLOSET



KITCHEN WITHOUT SIDEKICK







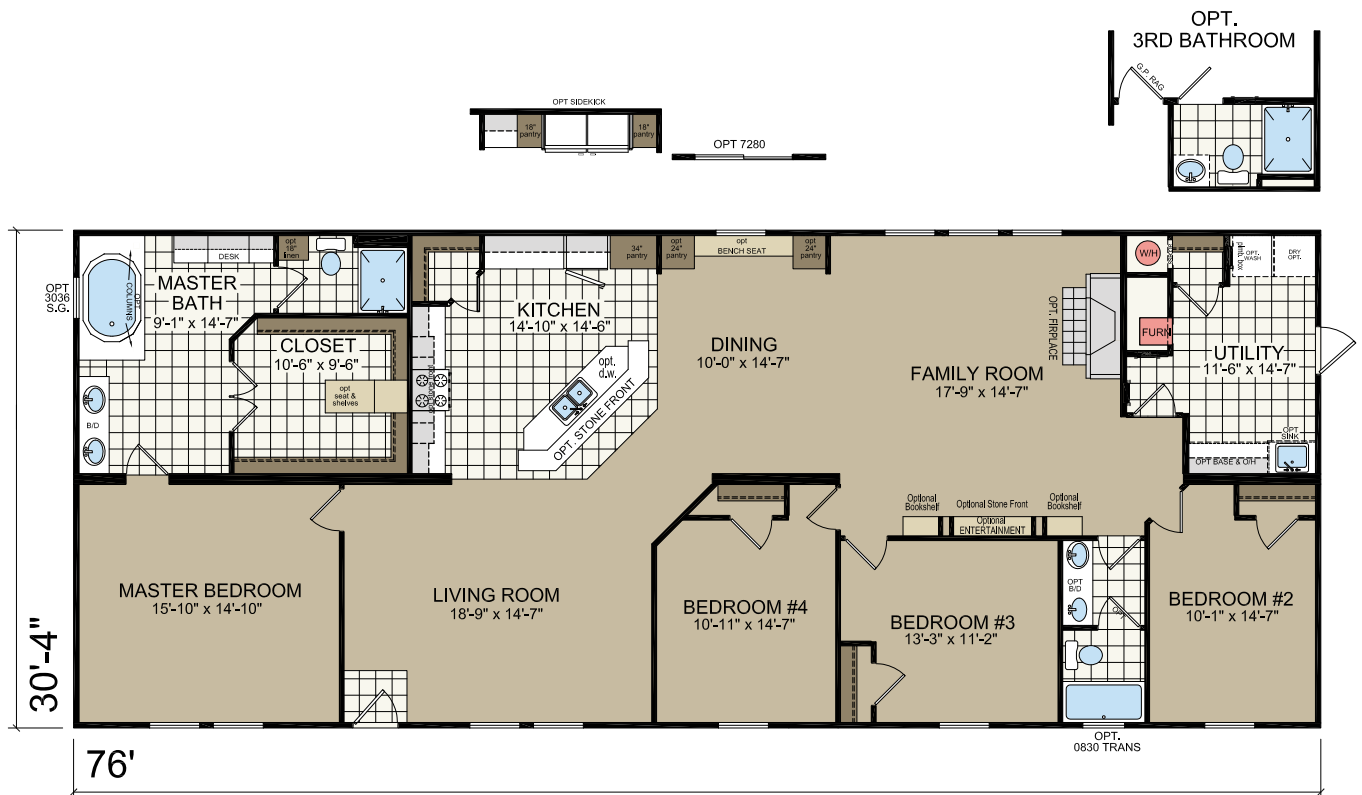


# CHESAPEAKE

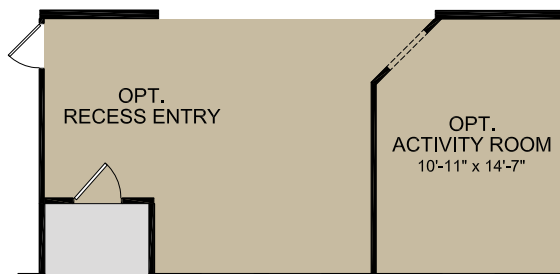
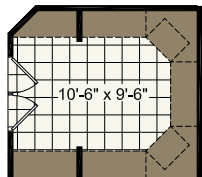
## Model 3978

30'-4" x 76'  
4 bed-2 bath  
2305 sq. ft.

Steps and Handrails by Others



**OPT. AMBASSADOR CLOSET**





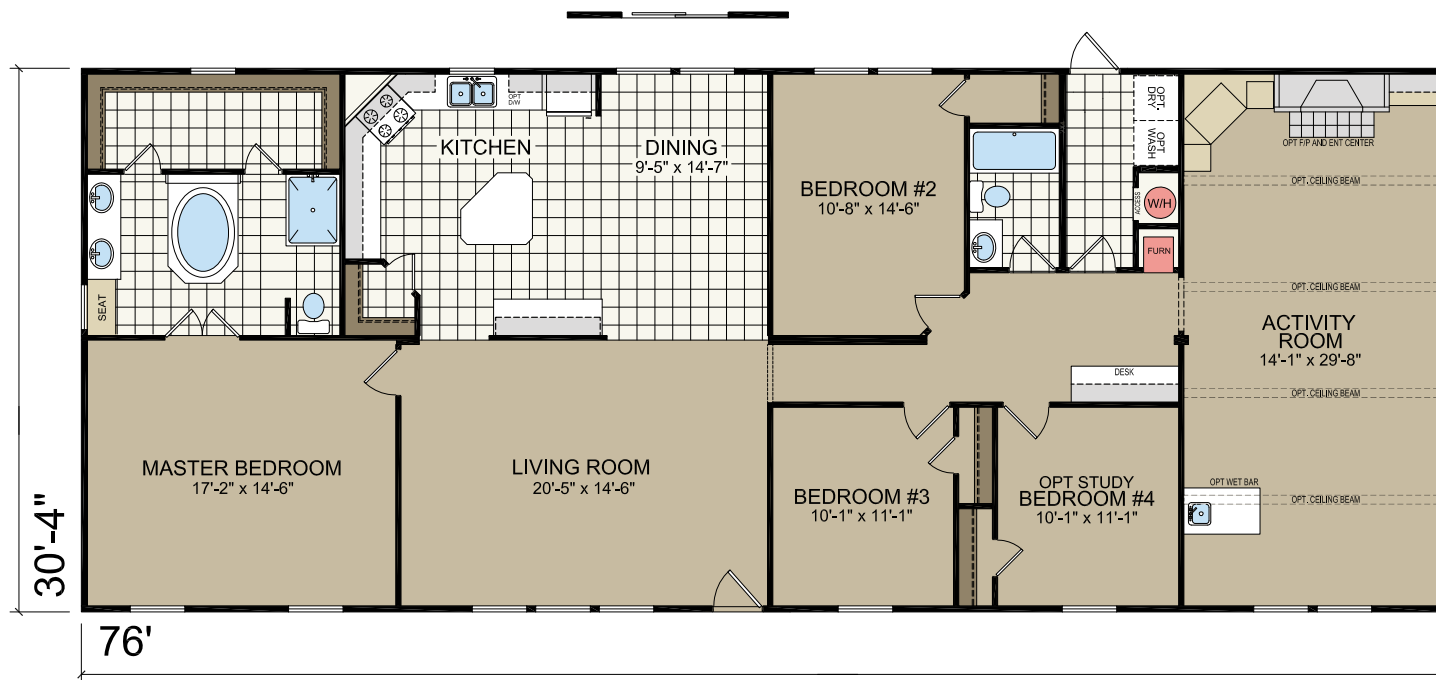
# HOLSTON

Model 3277

30'-4" x 76'  
4 bed-2 bath  
2305 sq. ft.



*Steps and Handrails by Others*



30'-4" x 76'  
4 bed-2 bath  
2305 sq. ft.

30'-4" x 76'  
4 bed-2 bath  
2305 sq. ft.





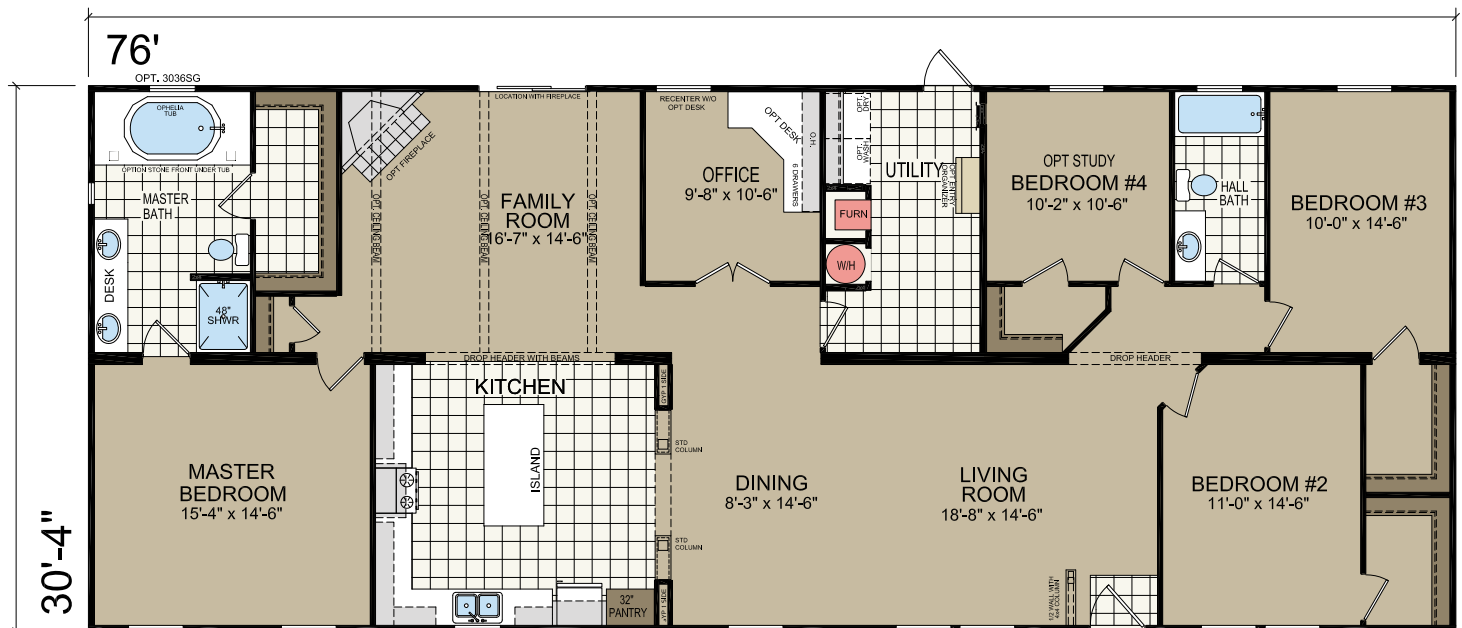
# GREENBRIAR

## Model 3876

30'-4" x 76'  
4 bed-2 bath  
2305 sq. ft.

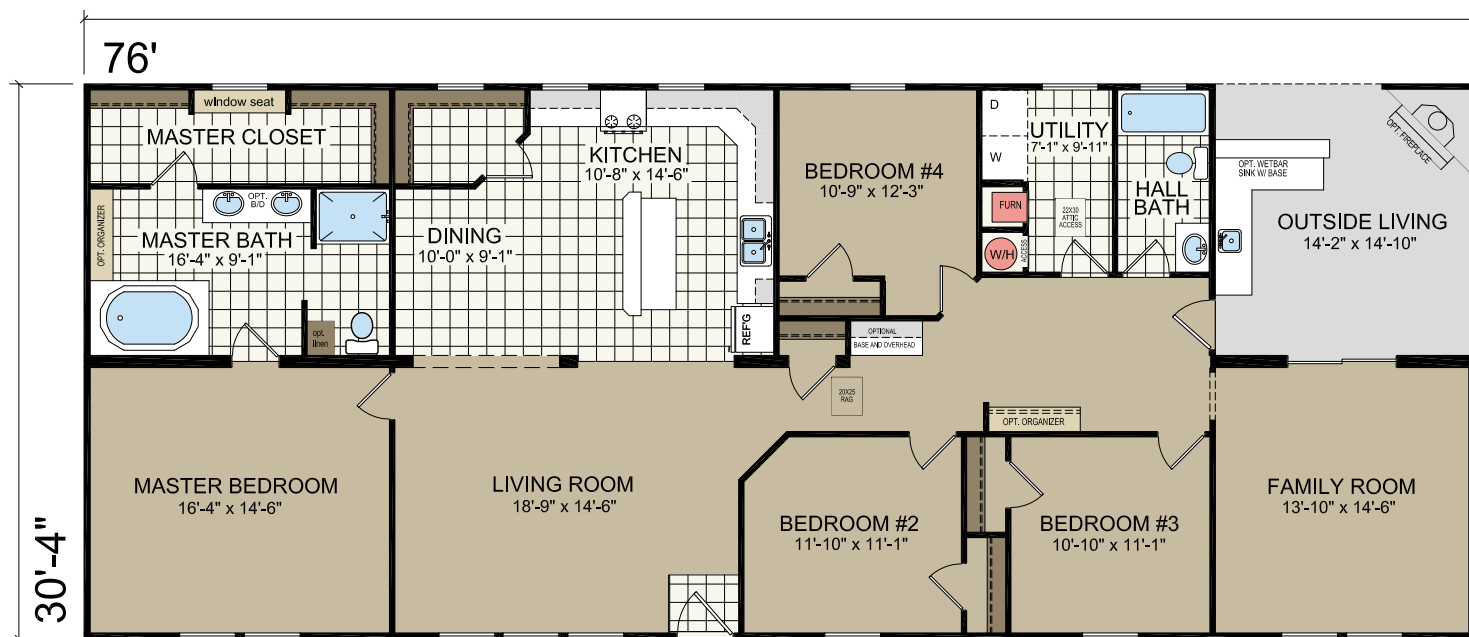


Steps and Handrails by Others



30'-4" x 76'  
4 bed-2 bath  
2305 sq. ft.

30'-4" x 76'  
4 bed-2 bath  
2305 sq. ft.





# DUTCH SERIES

## STANDARD FEATURES - MULTI SECTION

### KITCHEN & BATH

- "Black" Whirlpool® Appliances
- 18 C.F. Frost-Free Refrigerator
- 30" Free Standing Electric Range
- Designer Range Hood
- 42" Texas Overhead Cabinet Designs
- Cabinet Above Refrigerator
- Lined Overhead Cabinets
- MDF Raised Panel Cabinet Doors
- Concealed Cabinet Door Hinges
- Drawer Over Door Base Cabinets
- Laminate Countertops, Backsplash & Edging
- "Congoleum Diamondflor®" No Wax Vinyl Flooring
- Stainless Steel Kitchen Sink
- Fiberglass Tubs and Showers Per Print
- Flat Mirror(s) Trimmed w/ 2 1/4" Colored Profile
- Vanity Light Above Each Sink (2 Bulb)
- Medicine Cabinet Above Toilet (Hall Bath)
- 1/2 Center Shelf in Base Cabinets
- Towel Bar & Tissue Holder (Each Bath)
- Platform Soaker Tub w/ Recessed Can Light (Glamour Baths)
- Dual Sinks (Glamour Baths)

### PLUMBING, HEATING & ELECTRICAL

- In-floor Heat Duct Crossovers
- Smoke Detectors in Main Living Areas & All Bedrooms
- 200 AMP Service
- Electric Furnace
- 40 Gallon Electric Water Heater
- Exterior Electrical Receptacle - Location Per Print
- PEX Plumbing Lines
- Whole House Shut-Off Valve
- Water Shut-Off Valves - All Toilets
- GFI Receptacles in Kitchen and Baths
- Plumb & Wire for Washer & Dryer
- Recessed Can Lights in Kitchen
- Sconce Light Outside Hall Bathroom

### INTERIOR

- Colored Feature Walls - Predetermined Locations
- 2" Mini-Blinds Throughout
- Blown Textured Ceiling
- Vinyl Wall Panels Throughout
- Live Wire Carpet by Shaw®
- 3/8" Rebond Carpet Pad
- ClosetMaid® Vented Shelving
- Glass Ceiling Lights Fixtures
- Two-Panel Interior Doors w/ Return Air Vents Above
- Upgraded Trim in Main Living Area
- Tile Foyer Entry
- Designer Rods w/ Valances Throughout

### EXTERIOR

- Double 5 Vinyl Siding
- 20 Year Fiberglass Shingles
- Foam Core Exterior Sheathing
- Vinyl Insulated Windows
- 6" Smartpanel® Lineals - Front Door Side Only
- Light Fixtures at All Exterior Doors
- Exterior Dormer
- HardiePanel® Eaves
- Exterior Faucet - Location Per Print
- 38 x 82 Fiberglass Front Door w/ Frame Saver Door Frame
- 34x76 Cottage/9 Lite Rear Door

### STRUCTURE

- Wind Zone I Construction
- Thermal Zone 2 Construction
- Nominal 3/12 Roof Pitch
- R-22 Ceiling, R-11 Wall & R-11 Floor Insulation
- 7/16" OSB Roof Sheathing
- 2x6 Floor Joists 16" O.C. (28' Wides)
- 2x8 Floor Joists 16" O.C. (32' Wides)
- 2x4 Exterior Walls 16" O.C.
- 2x3 Interior Studs Throughout
- 8 Ft. Flat Ceilings - *all models with the exception of 24' wides which come vaulted in main living areas. (varies per print)*
- 19/32 T&G OSB Floor Decking
- Nominal 12" Overhangs All Around

Due to continuous product development and improvement, prices, specifications and material are subject to change without notice or obligation. Square footage and other dimensions are approximate. Included images are artist renderings and are not intended to be an accurate representation of the homes. Renderings and Floor Plans may be shown with optional features and / or third party additions that may not be available in all regions or situations. Exterior Renderings may include onsite builder built options not offered by Champion Home Builders, Inc.

# Dutch® Housing

4055 U.S. 401 S.  
Lillington, NC 27546

[www.atlantichomesnc.com](http://www.atlantichomesnc.com)

CHAMPION®

MANUFACTURED BEAUTIFULLY™