

# Dutch<sup>®</sup> Housing

## SINGLE SECTION

More  
Home for  
the Money





# About us

## **A place to call your own**

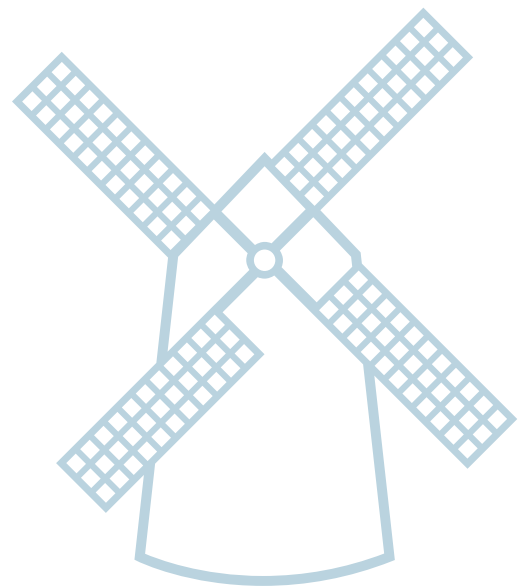
Beyond just building you a house, we're committed to providing you and your family with a home to make memories in that will last a lifetime. Somewhere you can feel secure. A place you can call your own. A home that fits your lifestyle and has your own personal touch. Whether you're an active young family constantly on the go or empty-nesters ready to simplify, just relax – we have a home that's right for you.

## **More choice, more freedom**

Our vast selection of floor plans, color choices and options give you the design choices you want to create a home you'll truly enjoy. Using our online Kitchen Designer, it's easy to create the kitchen of your dreams.

## **Confidence and trust**

Over the years, we've built more than just homes. We've built homebuyer trust in our ability to satisfy their needs and we're confident we can provide you with a home that will meet your needs and exceed your expectations.



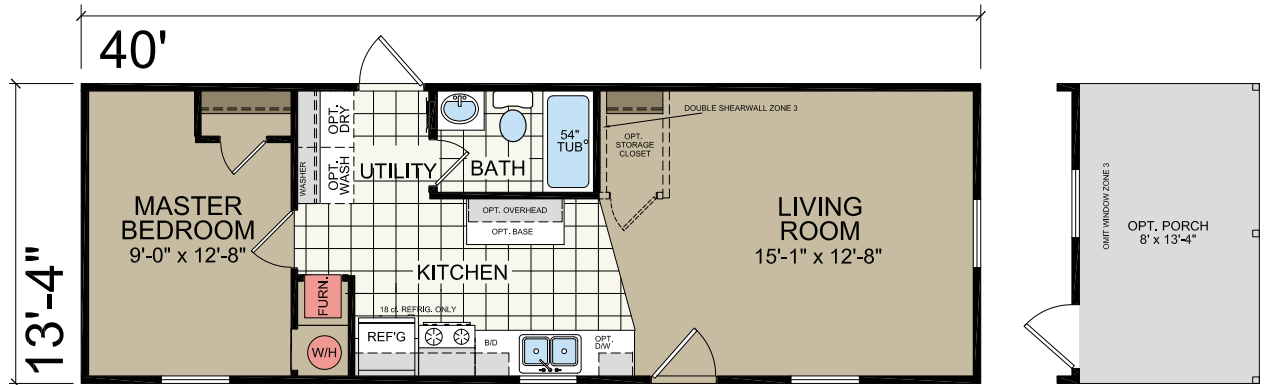
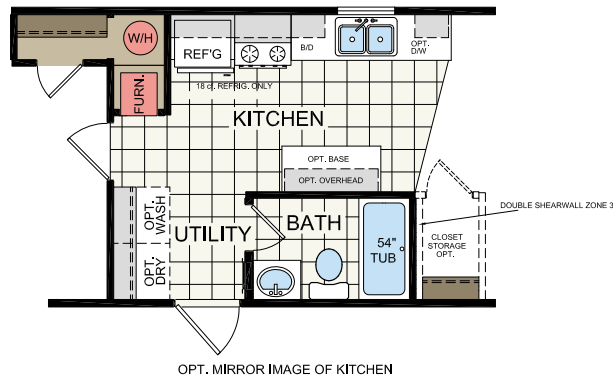




## HUNTINGTON

Model 9440

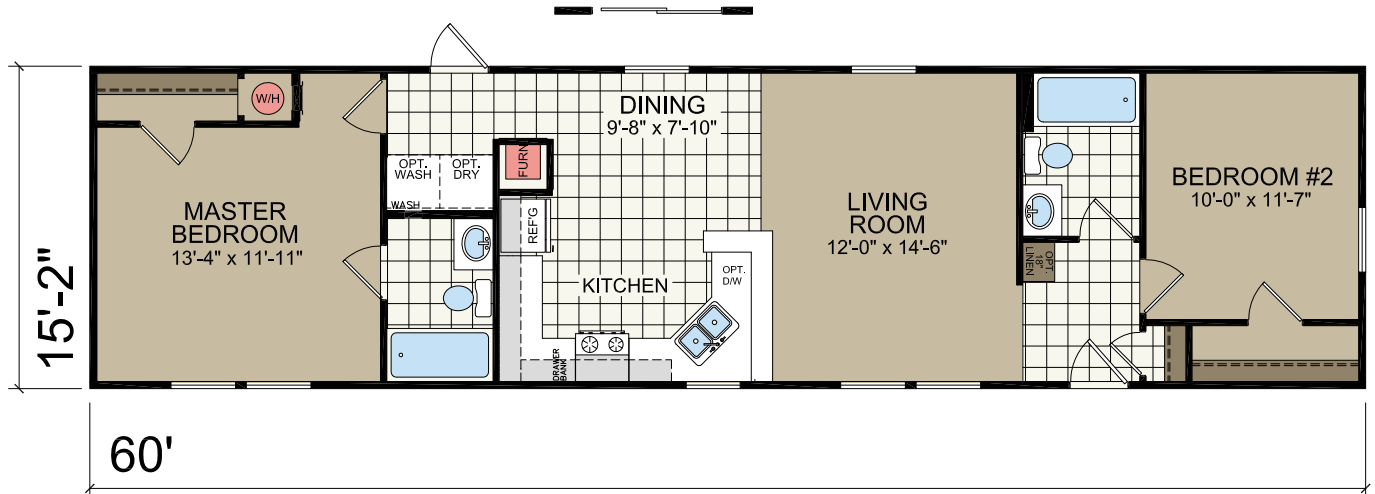
13'-4" x 40'  
1 Bed-1 Bath  
533 sq.ft.



## PAMLICO

Model 1660

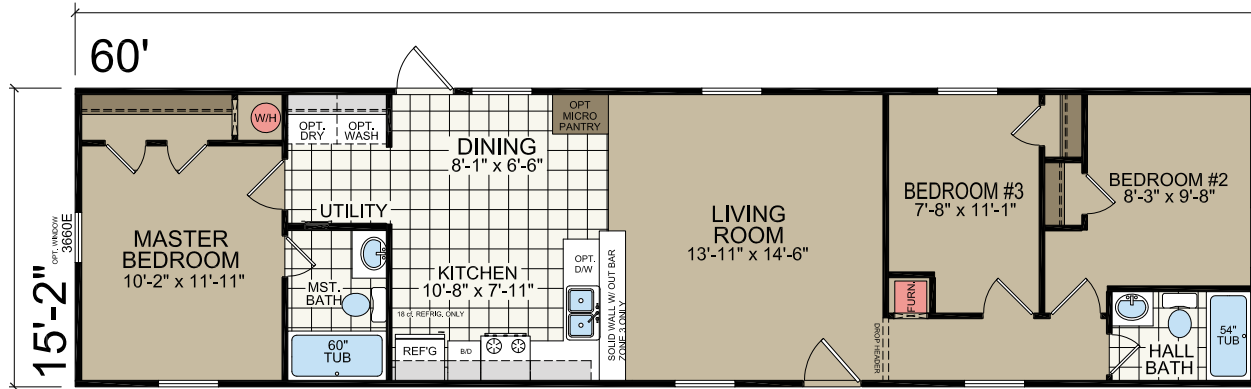
15'-2" x 60'  
2 Bed-2 Bath  
910 sq.ft.



## CARLSBAD

Model 9660

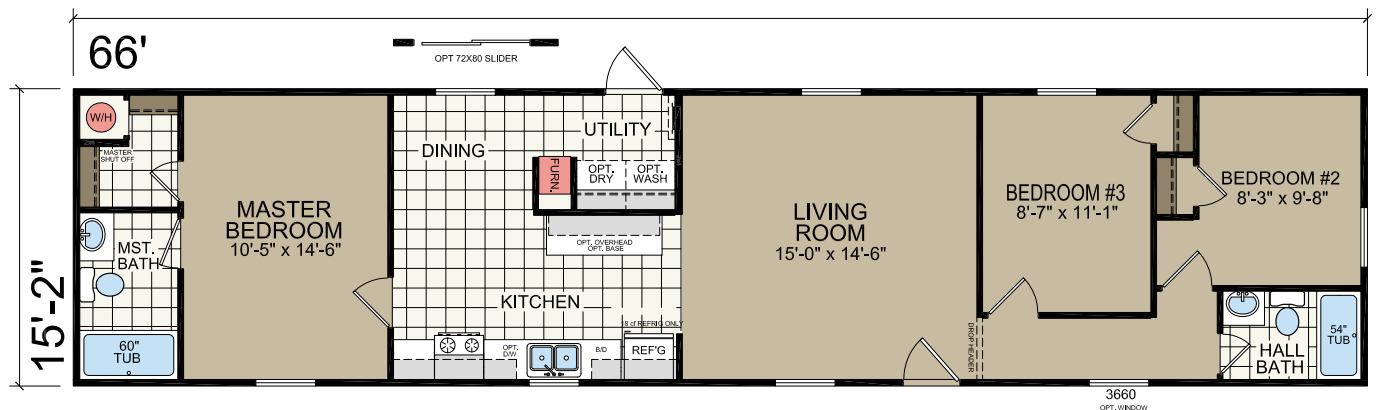
15'-2" x 60'  
3 Bed-2 Bath  
910 sq.ft.



## BELMONT

Model 9666

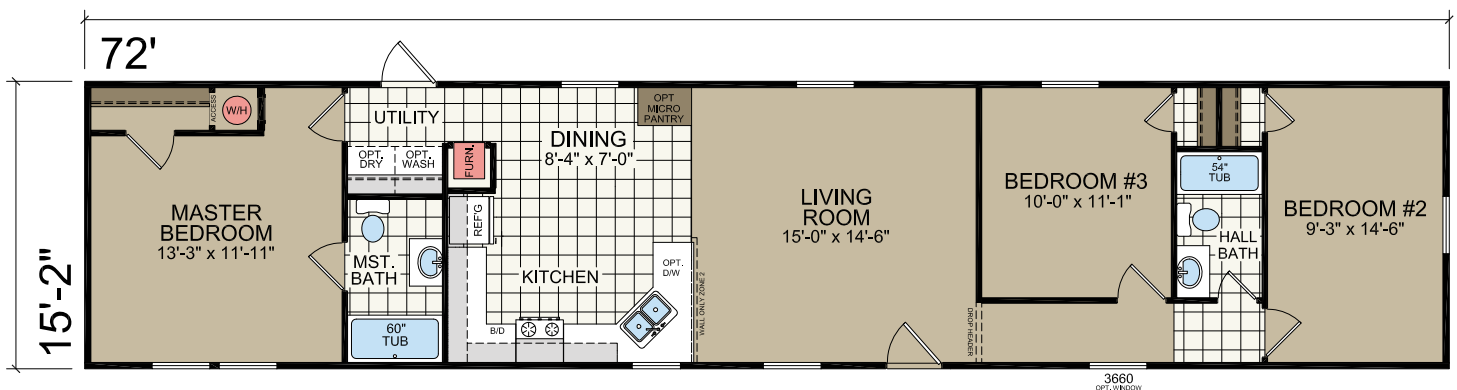
15'-2" x 66'  
3 Bed-2 Bath  
1001 sq.ft.



## BAYSHORE

Model 9672

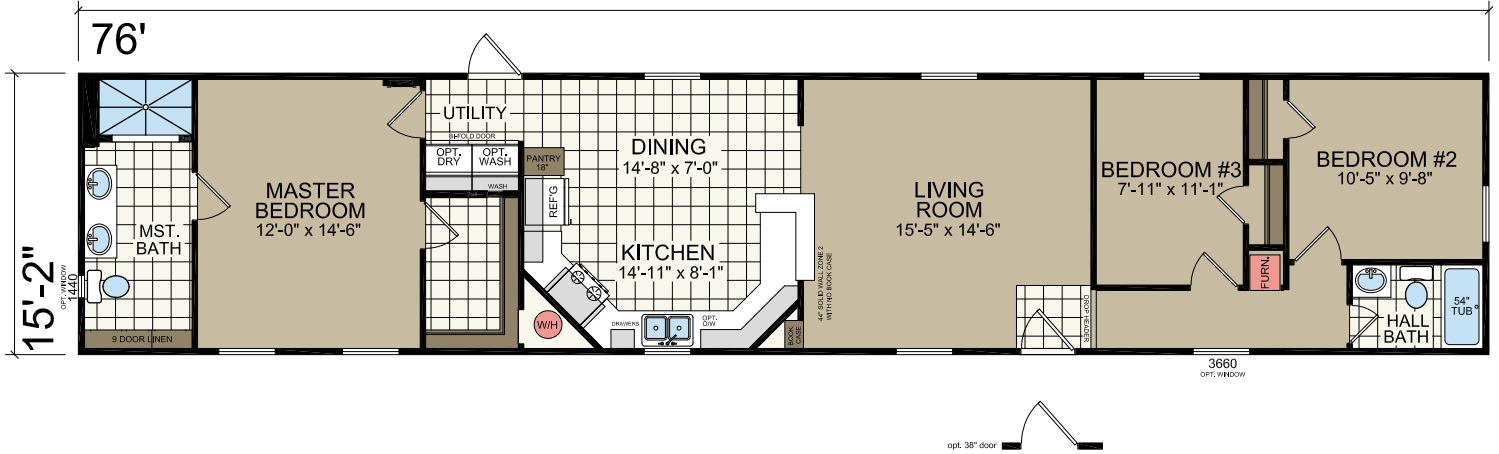
15'-2" x 72'  
3 bed-2 bath  
1092 sq. ft.



# CONOVER

Model 1676-01

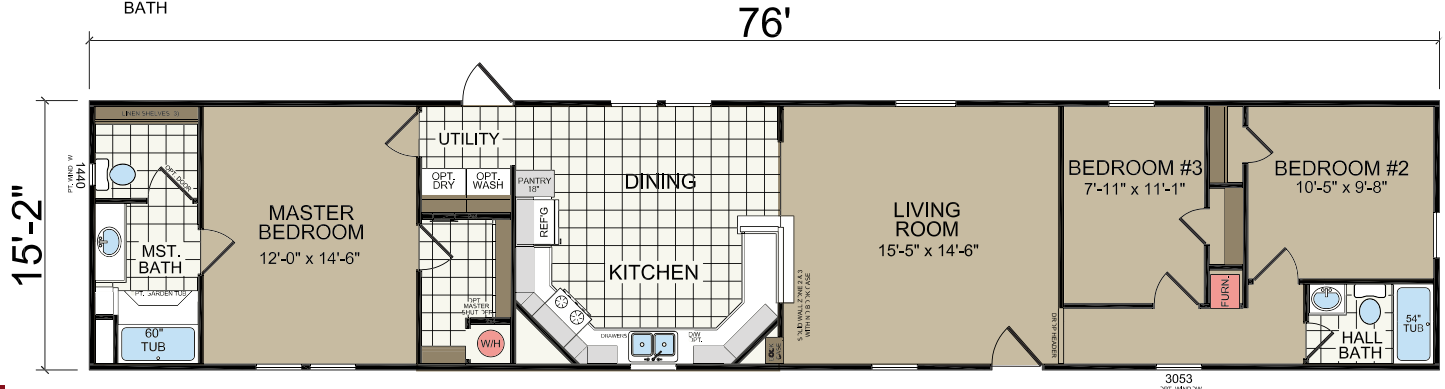
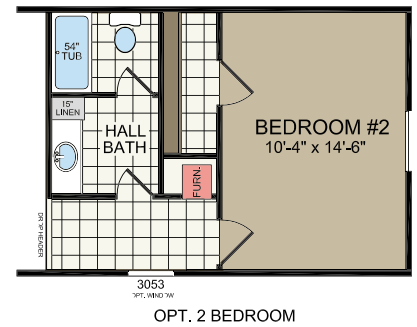
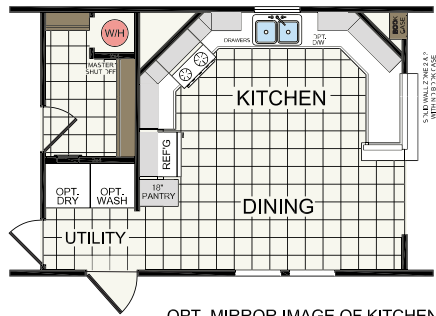
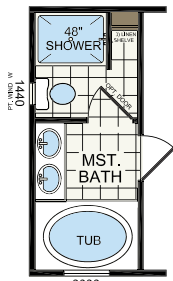
15'-2" x 76'  
3 bed-2 bath  
1152 sq. ft.



# FORSYTHE

Model 9678

15'-2" x 76'  
3 bed-2 bath  
1152 sq. ft.



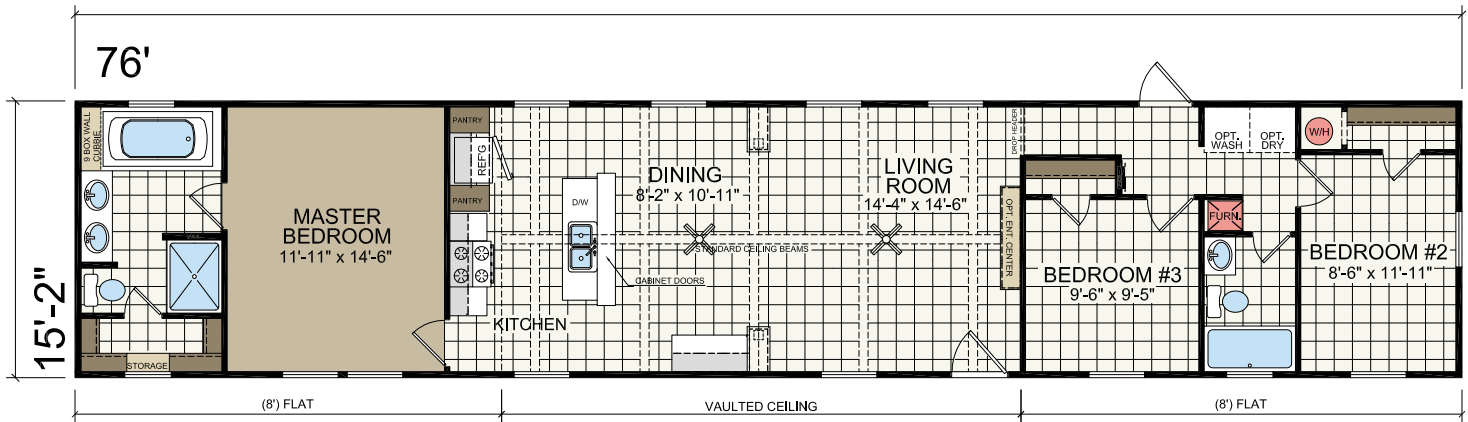


# HALIFAX

Model 1676-07

15'-2" x 76'  
3 bed-2 bath  
1153 sq. ft.

Shown with Optional Exterior









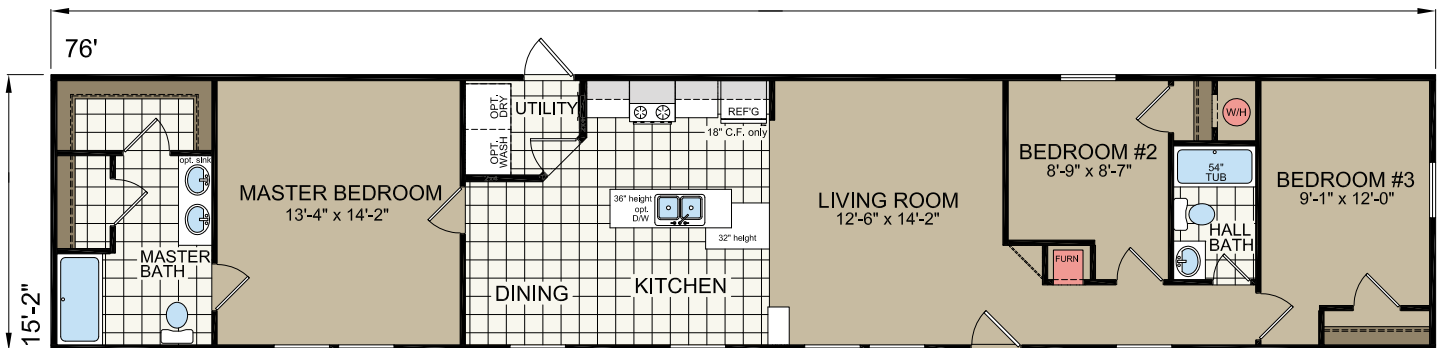
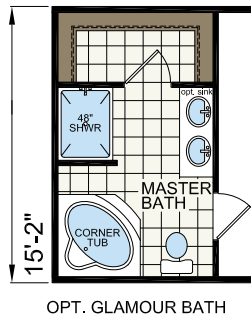
# CARTERET

Model 9681

15'-2" x 76'  
3 bed-2 bath  
1153 sq. ft.



Shown with Optional Site-built Porch by Others







# DUTCH ELITE SERIES

## STANDARD FEATURES- SINGLE SECTION

### KITCHEN & BATH

- "Black" Whirlpool® Appliances
- 18 C.F. Frost-Free Refrigerator
- 30" Free Standing Electric Range
- 30" Lighted Range Hood
- 42" Texas Overhead Cabinet Designs
- Shelf Above Refrigerator
- Lined Overhead Cabinets
- MDF Raised Panel Cabinet Doors
- Concealed Cabinet Door Hinges
- Laminate Countertops, Backsplash & Edging
- "Congoleum Diamondflor®" No Wax Vinyl Flooring
- Stainless Steel Kitchen Sink
- Flat Mirror(s) Trimmed w/ 2 1/4" Colored Profile
- 1/2 Center Shelf in Base Cabinets
- Bank of Drawers in Kitchen
- Cabinet Crown Molding
- Plastic Tub and Showers w/1-Piece Surrounds

### PLUMBING, HEATING & ELECTRICAL

- Total Electric
- Smoke Detectors in Main Living Areas & All Bedrooms
- 200 AMP Service
- Electric Furnace
- 30 Gallon Electric Water Heater
- Exterior Electrical Receptacle - Location Per Print
- PEX Plumbing Lines
- Water Shut-Off Valves - All Toilets & Sinks
- GFI Receptacles in Kitchen and Baths
- Plumb & Wire for Washer & Dryer
- 8 Wire Thermostat

### INTERIOR

- Colored Feature Walls - Predetermined Locations
- 2" Mini-Blinds Throughout
- Blown Textured Ceiling
- Vinyl Wall Panels Throughout
- Live Wire Carpet by Shaw®
- 3/8" Rebond Carpet Pad
- ClosetMaid® Vented Shelving
- Glass Ceiling Lights Fixtures
- Two-Panel Interior Doors w/ Return Air Vents Above
- Upgraded Trim in Main Living Area
- Tile Foyer Entry
- Designer Rods w/ Valances Throughout

### EXTERIOR

- Double 5 Vinyl Siding
- 20 Year Fiberglass Shingles
- Foam Core Exterior Sheathing
- Vinyl Insulated Windows
- Light Fixtures at all Exterior Doors
- Exterior Dormer
- Metal Eaves
- 38 x 82 Fiberglass Front Door w/Frame Saver Door Frame
- 34 x 76 Cottage Rear Door
- Shutters on Front Door Side & Hitch End

### STRUCTURE

- Wind Zone I Construction
- Thermal Zone 2 Construction
- R-22 Ceiling, R-11 Wall & R-11 Floor Insulation
- 7/16" OSB Roof Sheathing
- 2x6 Floor Joists 16" O.C. (14' Wides)
- 2x8 Floor Joists 16" O.C. (16' Wides)
- 2x4 Exterior Walls 16" O.C.
- 2x3 Interior Studs Throughout
- 8 Ft. Flat Ceilings - All Models
- 19/32 T&G OSB Floor Decking

# Dutch® Housing

4055 U.S. 401 S.  
Lillington, NC 27546

[www.atlantichomesnc.com](http://www.atlantichomesnc.com)

CHAMPION®

MANUFACTURED BEAUTIFULLY™