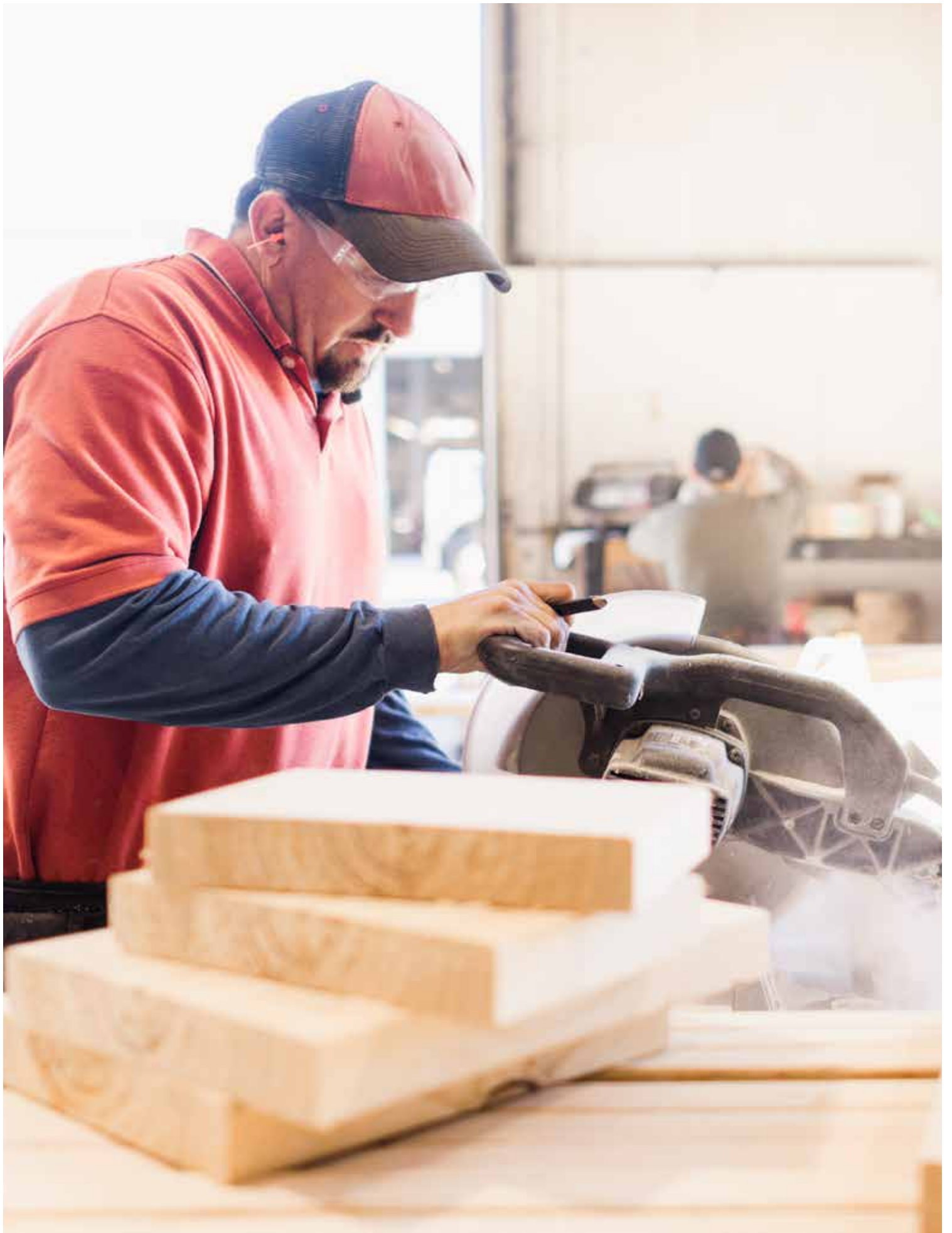


# MODULAR



ATLANTIC<sup>®</sup>  
HOMES



# MADE FOR LIVING

**A heritage of excellence.**

Atlantic Homes has been providing families with quality homes for generations. With a unique combination of state-of-the-art manufacturing and high-quality building materials, we provide the highest value in housing. We have earned our reputation by consistently delivering more than our customers might expect. More innovative quality features. More home styles. More flexible floor plan designs. More helpful customer service. And, most of all, more home for the money.

**For you. For life.**

Beyond just building you a house, we're committed to providing you and your family with a home to make memories in that will last a lifetime. Somewhere you can feel secure. A place you can call your own. A home that fits your lifestyle and has your own personal touch. Whether you're an active young family constantly on the go or empty-nesters ready to simplify, just relax – we have a home that's right for you.

**Lifestyle. Choice.**

Our vast selection of floor plans and color options give you the freedom to express your personal style and fit your home around your life. Using our online Kitchen Designer, it's easy to create the kitchen of your dreams.



# 2748-01

PINE VIEW

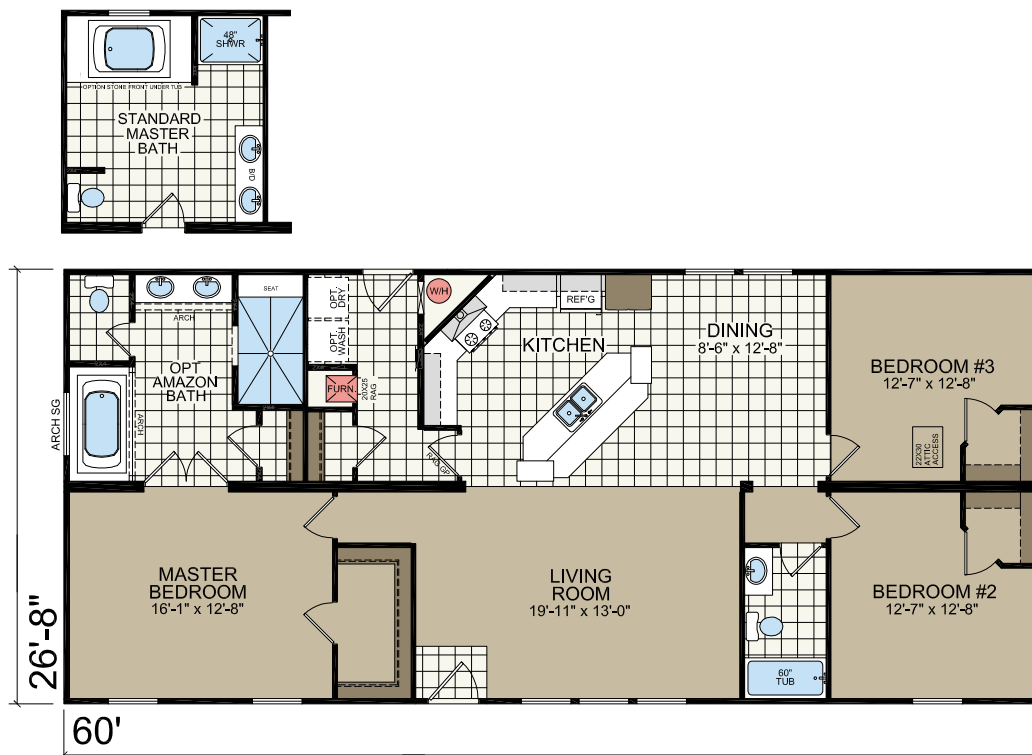
28' x 48'  
3 bed-2 bath  
1280 sq. ft.



# 2860-06

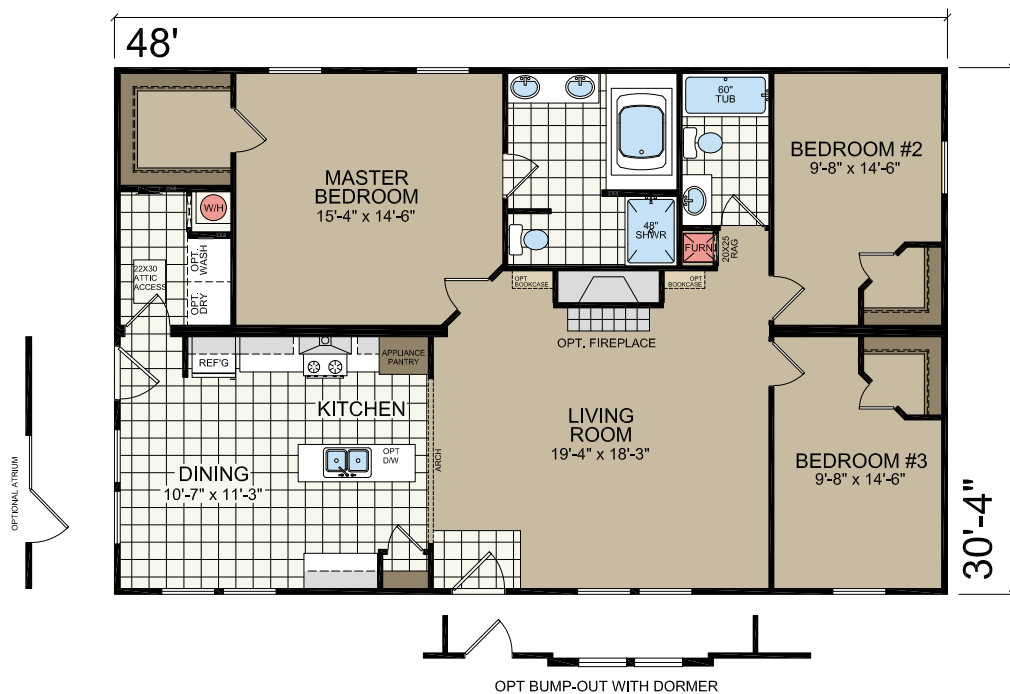
GARDEN COTTAGE

28' x 60'  
3 bed-2 bath  
1600 sq. ft.



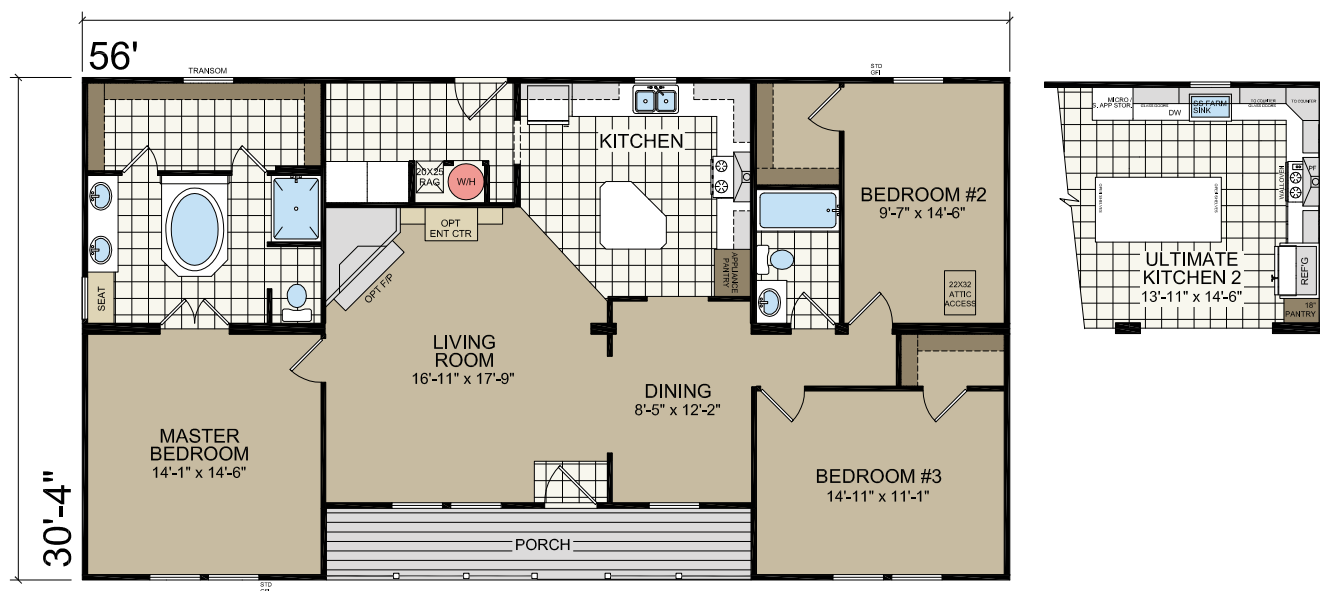
## CORNER COTTAGE

**32' x 48'**  
**3 bed-2 bath**  
**1455 sq. ft.**



3256  
WACCAMAW

**32' x 56'**  
**3 bed-2 bath**  
**1698 sq. ft.**



A large, modern kitchen with dark wood cabinets, a granite countertop, and a central island. The kitchen features a sink, stove, and dishwasher. A dining area with a red wall and a chandelier is visible through an arched doorway. The floor is covered in a checkered tile pattern.



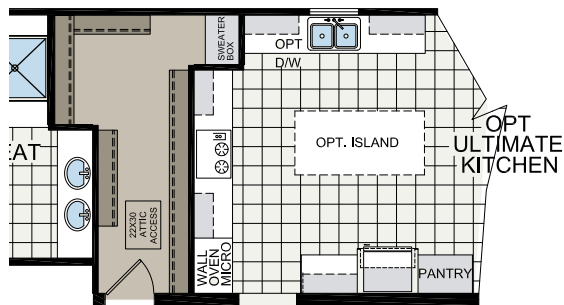
3266-01  
ARCHDALE





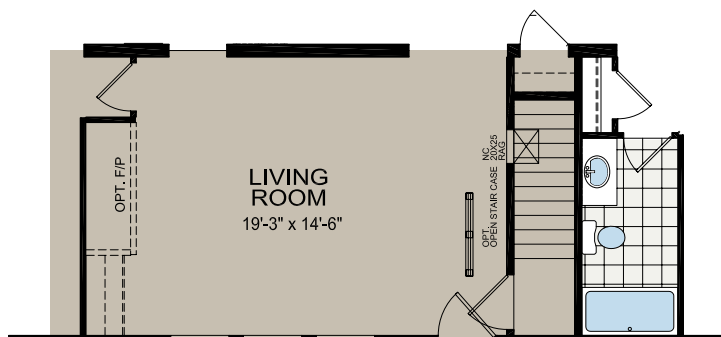
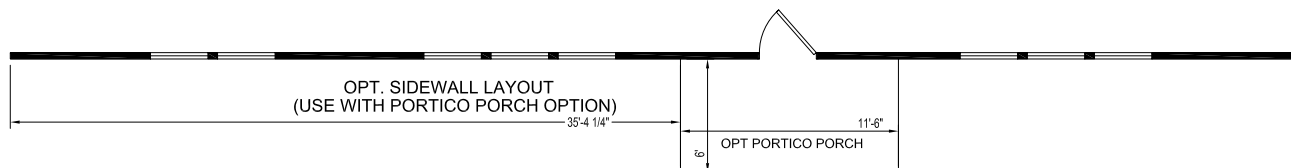
3268-06  
COVEVIEW

32' x 56'  
3 bed-2 bath  
1969 sq. ft.



UITE RETREAT BATHROOM

68'

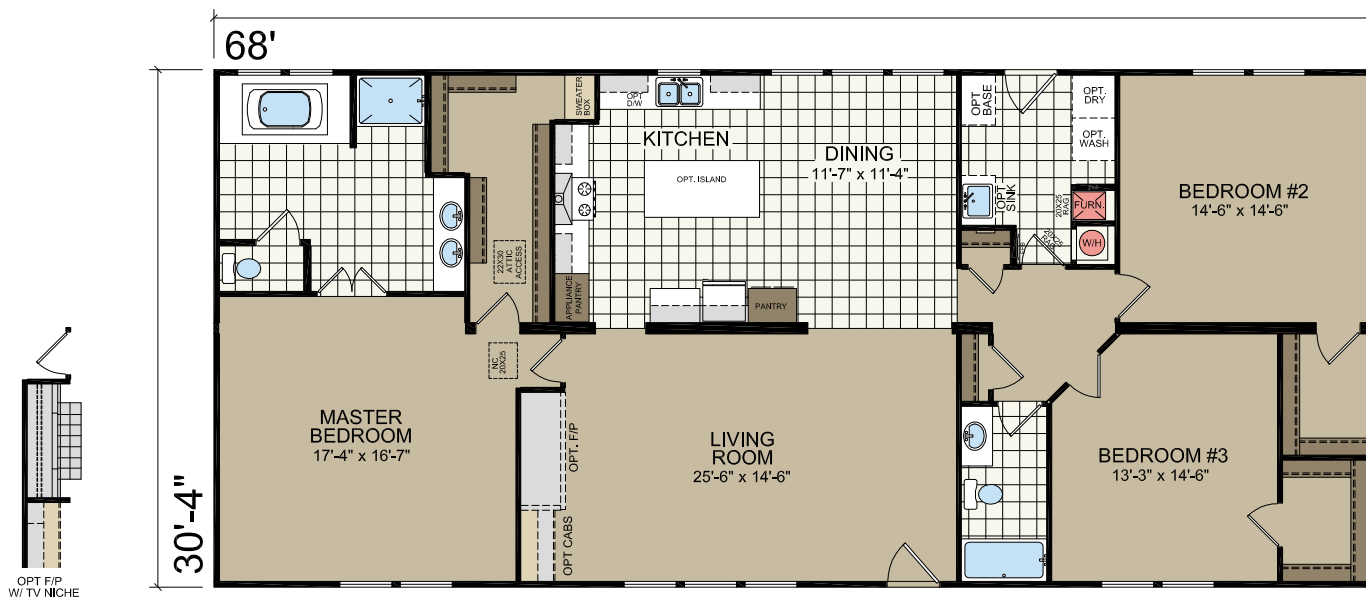
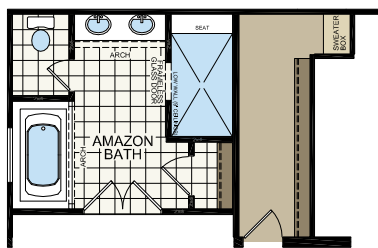
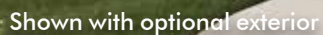


OPTIONAL STAIRWELL FOR CAPE COD



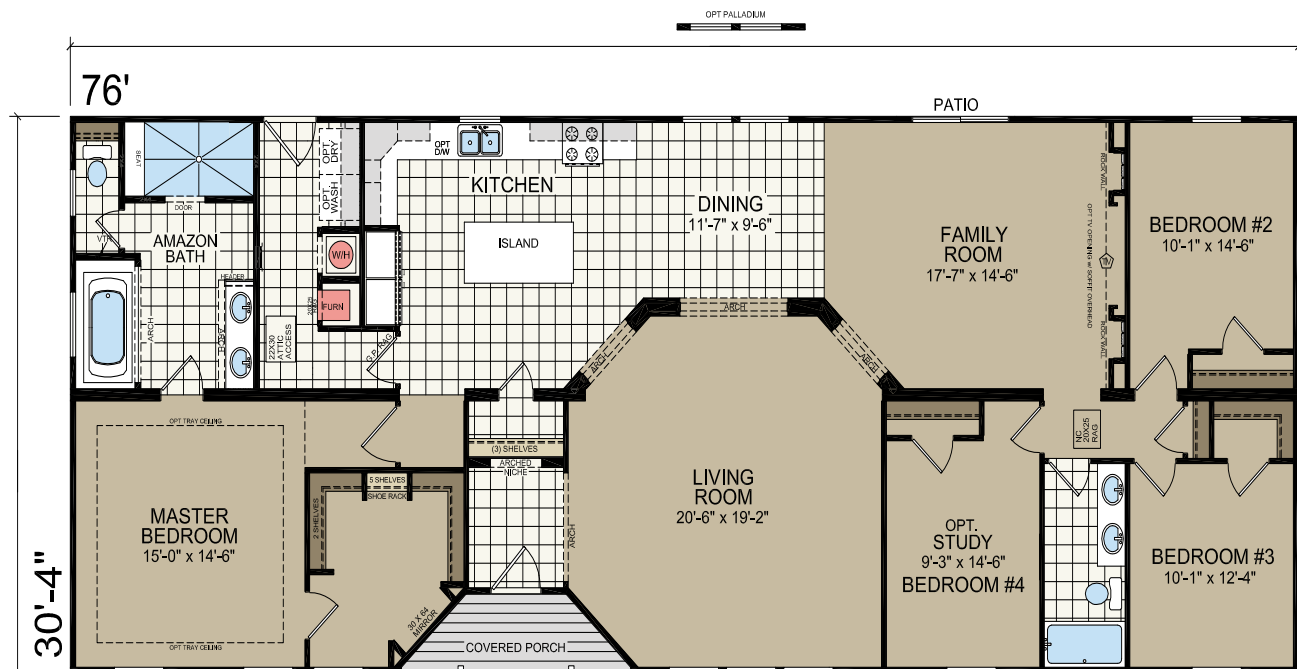
## FARM MANOR

**2062 sq. ft.**



TRYON

Shown with optional exterior





3276-05  
TRYON





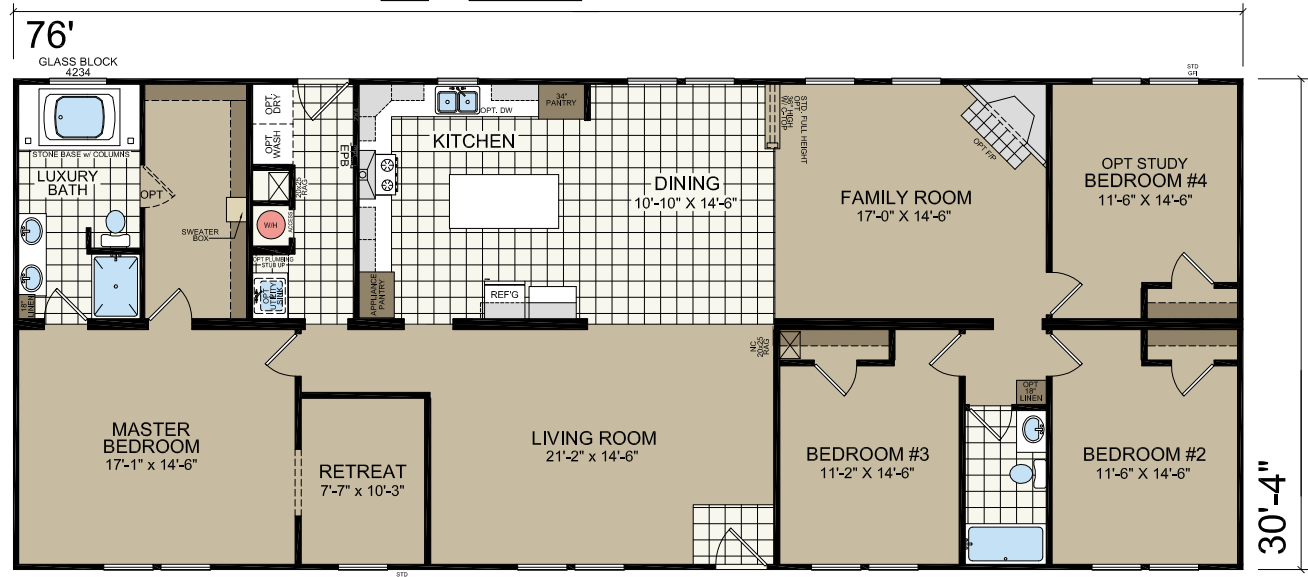
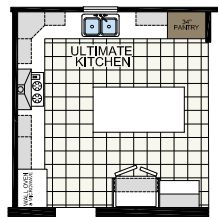
# 3276-07

PARENTS RETREAT

32' x 76'  
4 bed-2 bath  
2305 sq. ft.



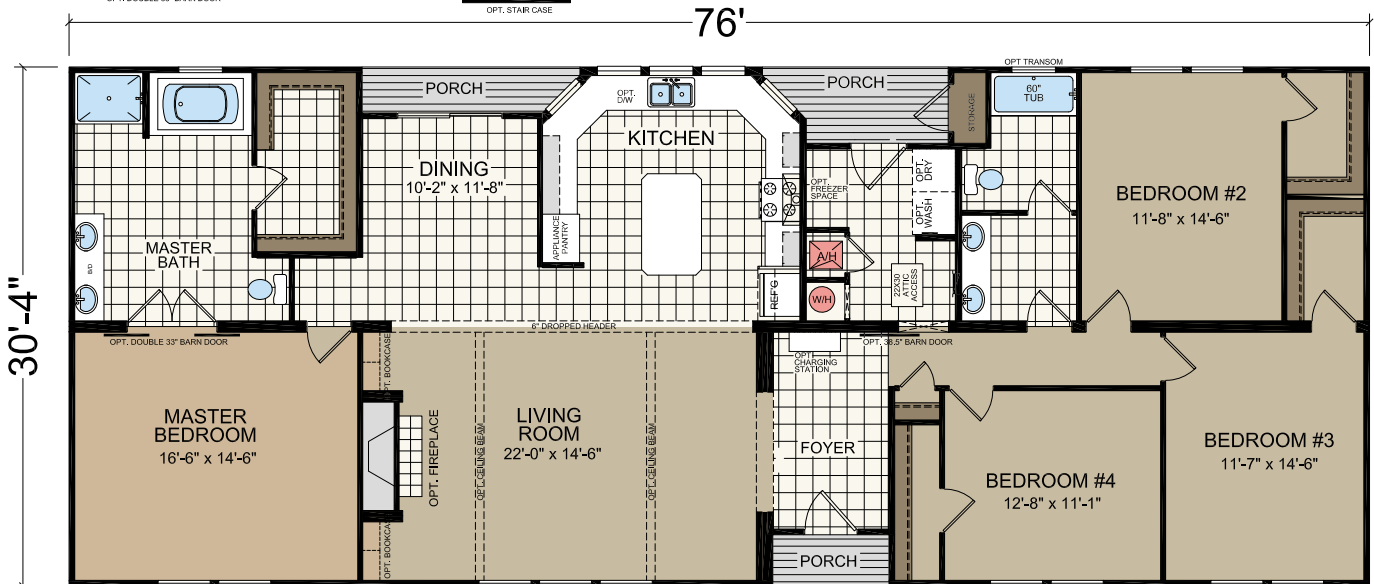
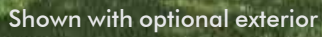
Shown with optional exterior





LAKEVIEW

**32' x 76'**  
**4 bed-2 bath**  
**2212 sq. ft.**



## COUNTRY ESTATE

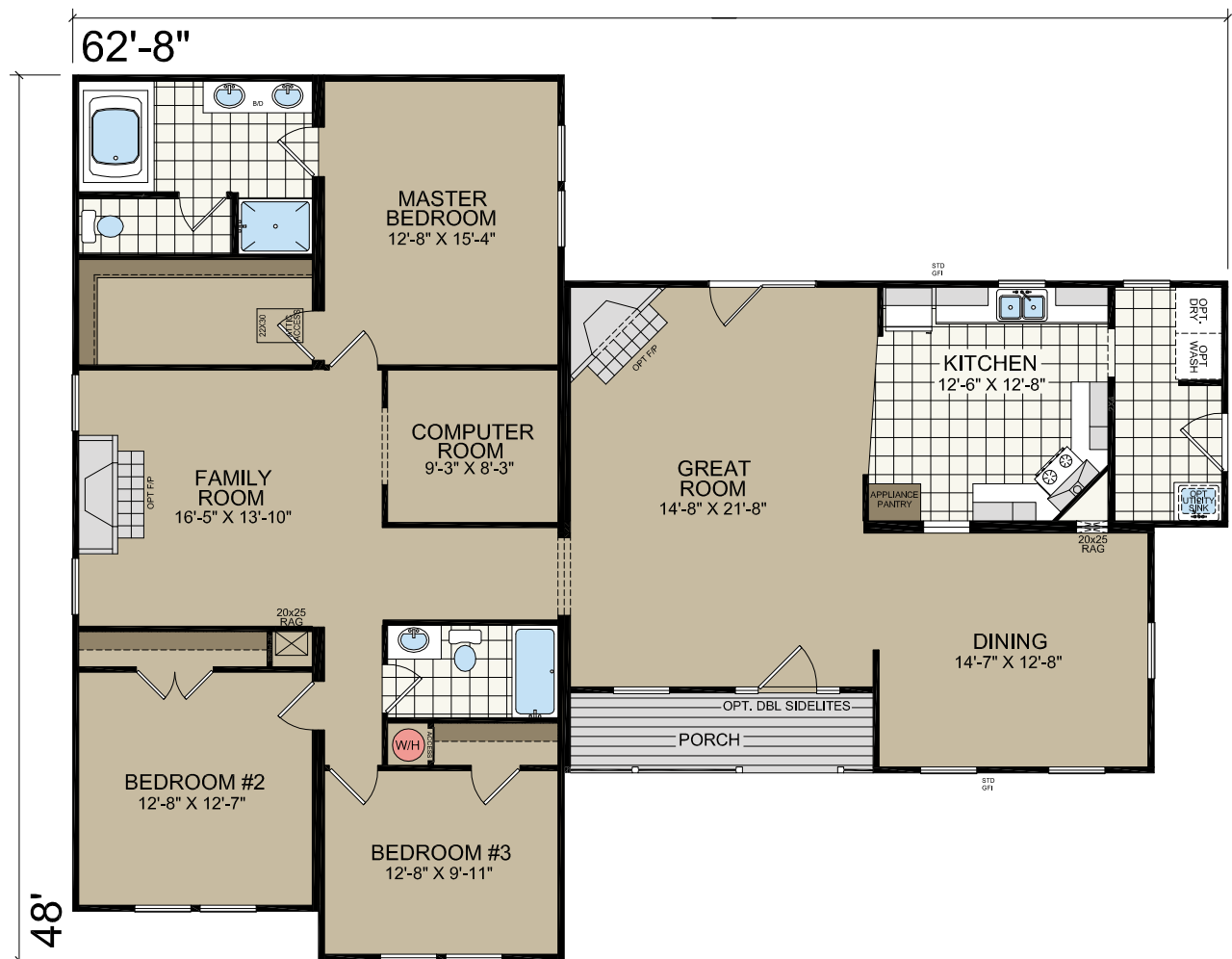
**2080 sq. ft.**



# 581

HOMESTEAD

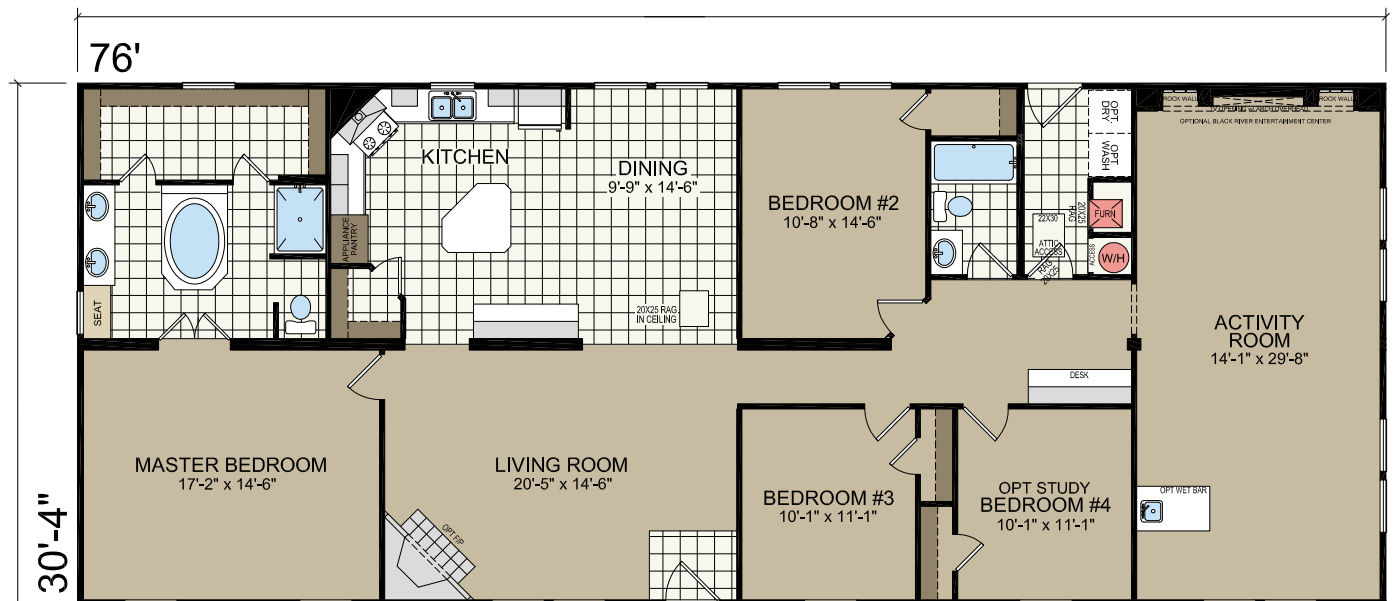
65' x 48'  
3 bed-2 bath  
2080 sq. ft.



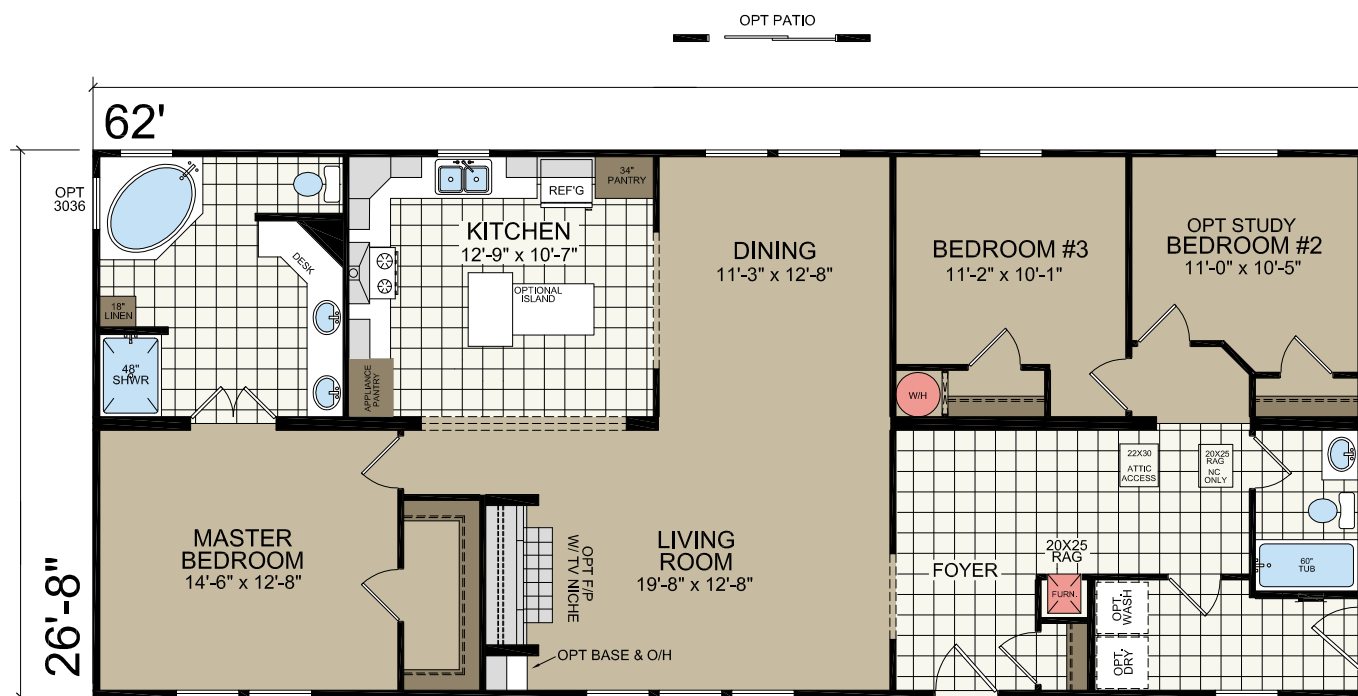


**76' x 26'**  
**4 bed-2 bath**  
**2305 sq. ft.**

**76' x 26'**  
**4 bed-2 bath**  
**2305 sq. ft.**

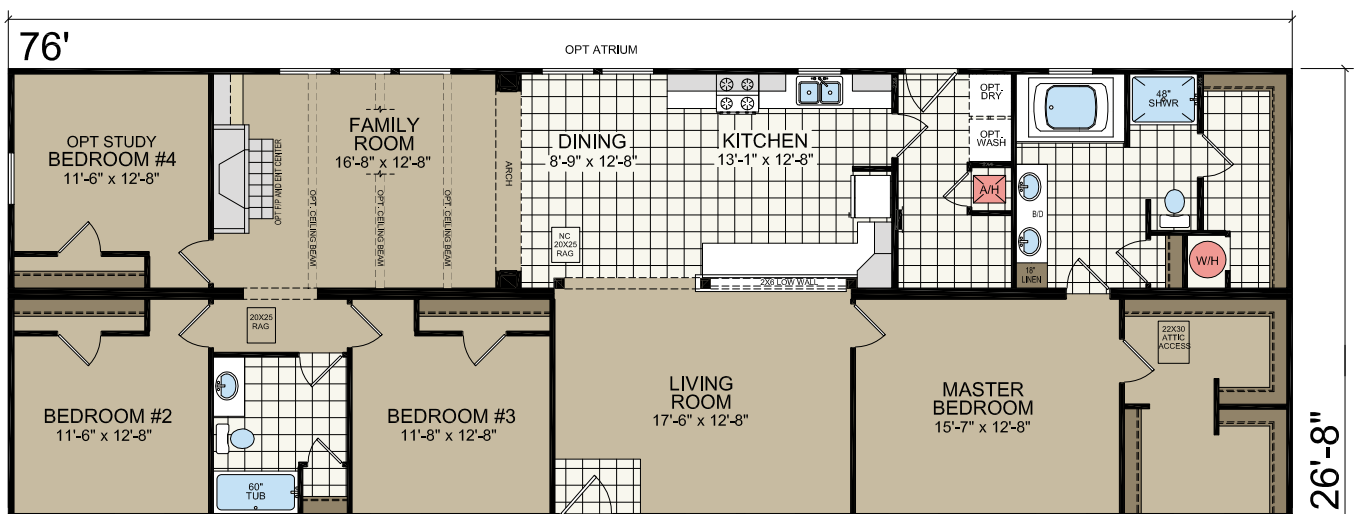






CHEROKEE

**76' x 28'**  
**4 bed-2 bath**  
**2027 sq. ft.**



# ATLANTIC<sup>®</sup>

HOMES

4055 US 401 S  
Lillington, NC 27546

[atlantichomesnc.com](http://atlantichomesnc.com)

CHAMPION<sup>®</sup>

MANUFACTURED BEAUTIFULLY<sup>™</sup>

Standards may be superceded  
by additional options chosen

## Champion Modular Standard Features

*Wellington* CHC Brand

### Construction

Off Frame Construction  
120 MPH 3-second Gust Construction (High Wind Areas Optional)  
R-30 Fiberglass batten insulation w/ vapor barrier ceiling  
R-19 Wall Insulation  
No Floor Insulation  
7/8" OSB Exterior Wall Sheathing  
7/8" OSB Roof Sheathing  
2 x 10 Floor joists with double rim bands 16" O.C. Off frame  
2x6 Exterior Walls 24" OC  
2x4, 24" OC Interior Wall Studs  
2x4, 16" OC Double Mate Line  
8' Flat Ceilings - All Models  
23/32" T&G OSB Floor Decking  
7/12 Pitch roof trusses 24" O.C.- Attic Storage Rafter  
Stipple Ceiling Texture  
Nominal 12" Overhangs  
Attic Tent Cover for Attic Access- site installed

### Plumbing and Heating

Furnace Per Print  
Perimeter Heat Registers Per Print (Registers & Boots Shipped Loose)  
50 Gallon Electric Water Heater  
PEX Water Supply Lines  
Whole House Shut-Off Valve (In Washer Box)  
Water Shut-Off Valves at All Toilets & Sinks  
Plumb & Wire for Washer & Dryer  
(2) Exterior Water Faucet (per print)  
Sealed Exterior Wall Receptacles (Nail on Boxes) and Switches

### Electrical

Total Electric & 200 AMP Service  
40 Space Panel Box  
Light Fixtures at All Exterior Doors  
Exterior GFI Electrical Receptacles - (Approved locations per print)  
GFI Receptacles in Kitchen and Baths  
8 Wire Thermostat  
LED Fixtures T/O  
(2) Pendant Lights in Kitchen

### Exterior

Vinyl Siding  
Architectural Fiberglass Shingles  
Low E Vinyl Windows w/ Grids & Sills  
38x82 Fiberglass Front Door w/ Dead Bolt (No Storm)  
38x82 1-Lite Rear Door & Blinds in Glass w/ Dead Bolt (No Storm)  
3 1/2" Window Trim (Front Door Side)  
6" Cement board fascia

### Cabinets

Marsh Cabinets - Highpoint, NC  
Crown Molding on Cabinets  
Lazy Susan Most Models  
36" Overhead Cabinets with Adjustable Shelves  
36" Base Cabinets T/O  
Concealed Adjustable Hinges on Cabinet Doors (Soft Close)  
36" High Marsh Vanity Cabinets  
Laminate Countertops & Crescent Edging in Kitchen and Baths  
Dual Sinks in Glamour Baths (most models)  
Bank of Drawers - Master Bath (per plan)  
Decorative Backsplash T/O  
Decorative Wall Behind Range

### Kitchen & Baths

Stainless Steel Kitchen Sink w/ Brushed Nickel Single Lever Metal Faucet  
Black Trimmed Vanity Mirrors  
Fiberglass Tubs/Showers (per print) w/ Metal Faucets  
60" 1 pc Showers with Sliding Doors (Unless Otherwise Noted)  
Euro-Style Vanity Lights Above Each Sink (2 bulb)  
Square Sinks w/ Euro Style Faucets in All Baths  
Free Standing Tub w/ Metal Filler in Glamour Baths (per print)

### Interior

1/2" Finished Sheetrock (Primed) w/ Square Corners T/O Including Closets  
5 1/4" Crown T/O (White Painted) Including Closets  
Craftsman Door/Window Molding T/O (White Painted) Including Closets  
3 1/4" Baseboard T/O (White Painted) Including Closets  
Vented Wire Shelving Over Washer/Dryer Areas (2 Rows)  
Superslide Closet Shelving  
White 3-Panel Interior Doors ((2) 36" Doors - Primary BR & Bath)  
Wave Lever Handles & (3) Moritsed Hinges  
Wooden Window Sills

### Floor Covering

FHA Rebond Carpet Pad  
Mohawk 25oz Carpet w/ Carpet Bar  
Vinyl Flooring (per print)

### Appliances

Stainless Steel European Style Range Hood  
25 cu ft Side by Side (SS)  
Glass Top 30" Free Standing Electric Range (Stainless Steel)  
Dishwasher (SS)

### Champion 7 Warranty

Included on All Models