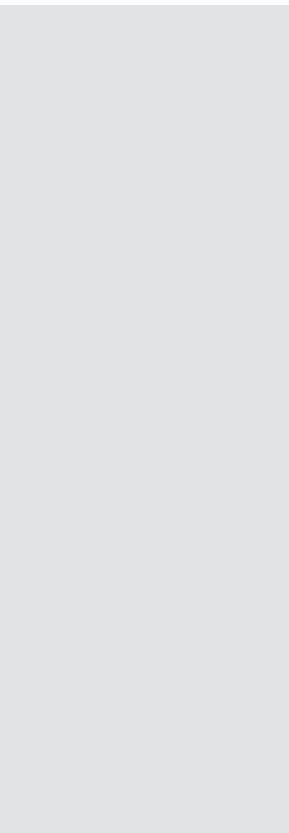
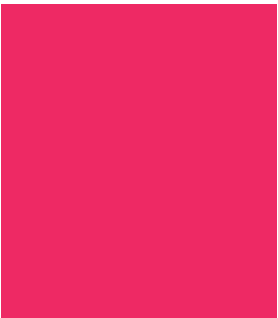
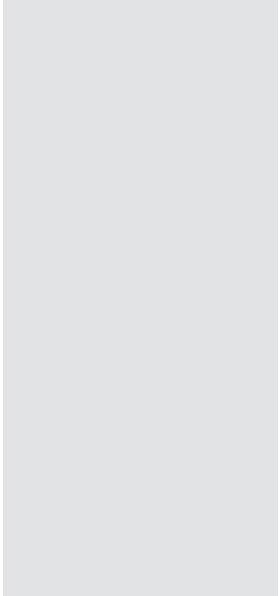
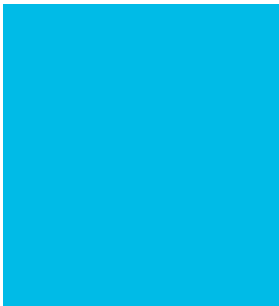


Dutch®  Housing



CHATEAU  
COLLECTION  
OF HOMES

# CHATEAU

## FAMILY of HOMES

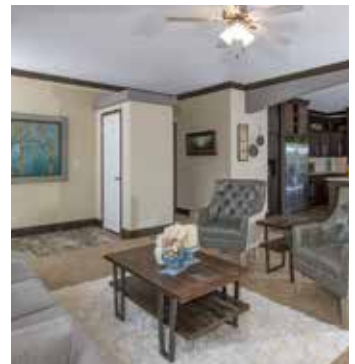
What makes your house a home? From a family of plans, you get to select from a variety of sizes and a multitude of options. The floor plan stretches between 64 feet and 76 feet to accommodate multiple layouts, adding extra bedrooms, a family room, den, or all purpose room. Multiple exteriors give the outside of your home the right style for you. Whether it's an entertainment center in the living room or your dream Ultimate Kitchen Two, there are many options to customize and personalize your new CHATEAU home.



Master Bathroom



Master Bathroom



Living Room

Dining Room







Living Room

IT'S  
AS  
EASY  
AS

1.  
PICK YOUR  
SIZE & LAYOUT

2.  
PICK YOUR  
EXTERIOR

3.  
PICK YOUR  
OPTIONS

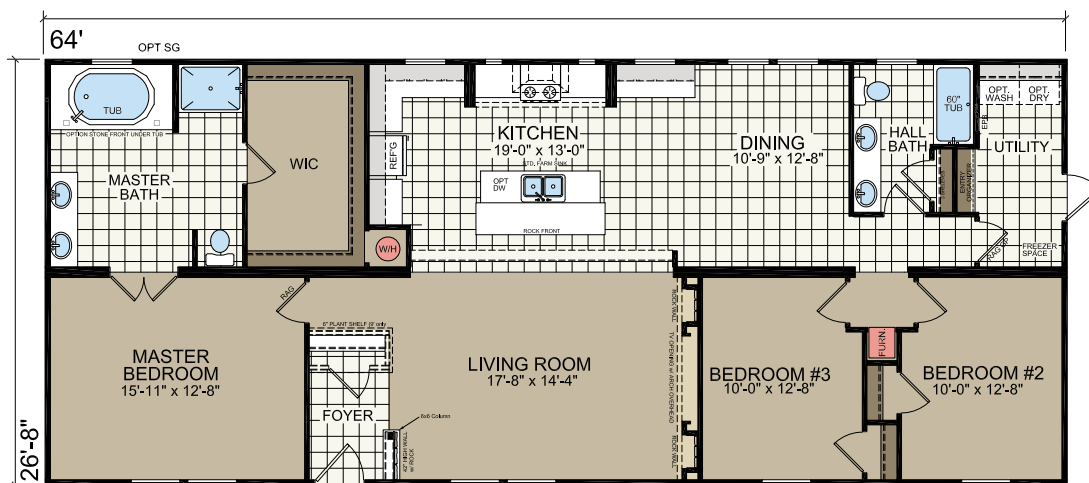
# 1. PICK YOUR SIZE & LAYOUT

This basic home is available in 28' wide and 30' wide and in lengths 64', 68', and 76'

## CHATEAU I

2864-03 | 3 bed-2 bath | 1706 sq.ft.

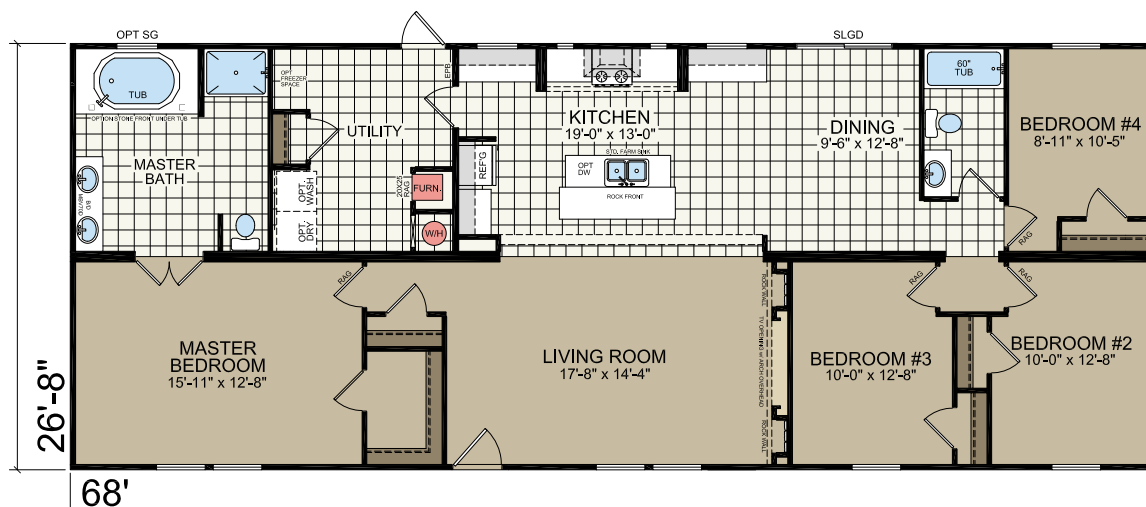
BILTMORE



## CHATEAU II

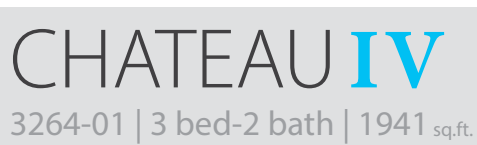
2868-05 | 4 bed-2 bath | 1813 sq.ft.

LE MANS

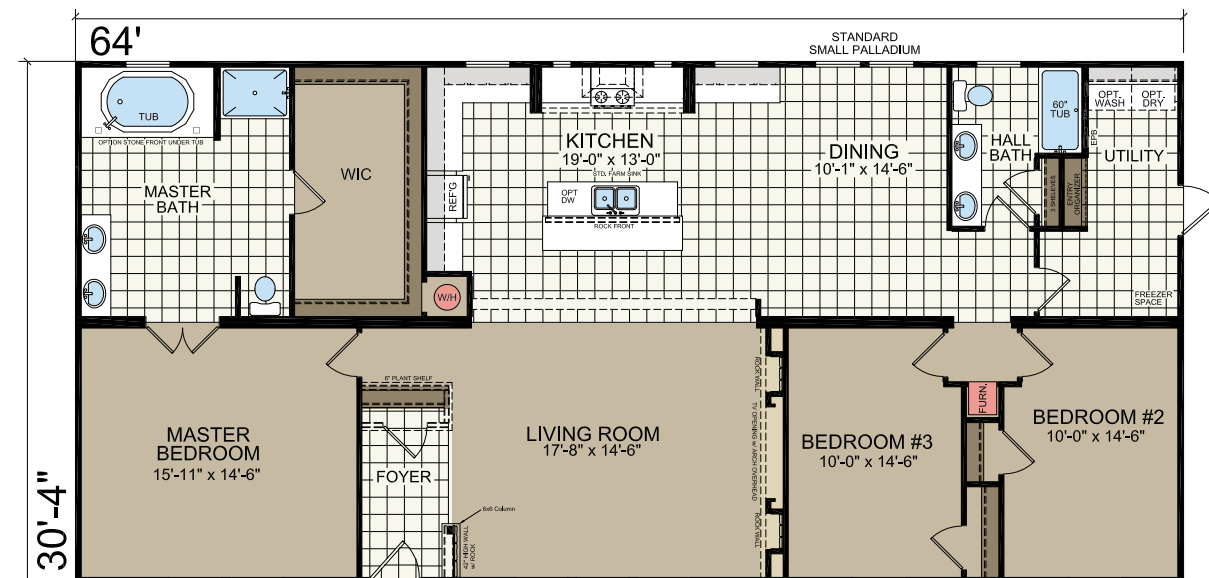


2876-08 | 3 bed-2 bath | 2026 sq.ft.

MEADOWVIEW



# BELLE VUE



3268-03 | 4 bed-2 bath | 2184 sq.ft.

[illegible]

3276-10 | 4 bed-2 bath | 2305 sq.ft.

76'

30'4"

STANDARD SMALL PLADIUM

MASTER BEDROOM 15'-11" x 14'-6"

MASTER BATH

TUB

OPTION STONE FRONT UNDER TUB

WIC

REF'G

WH

KITCHEN 19'-0" x 13'-0"

STOVE

OPT DW

2ND FRIDGE

DINING 10'-9" x 14'-6"

FAMILY ROOM 18'-1" x 14'-6"

UTILITY

OPT. WASH

OPT. DRY

FURN.

FREEZER SPACE

W.C.

BATH HALL

60" TUB

BEDROOM #3 13'-2" x 14'-6"

BEDROOM #2 13'-2" x 14'-6"

LIVING ROOM 17'-11" x 14'-5"

FOYER

12" PLANT SHelf

12" TALL W/ ROSE

OVER BENCH CLOTH IN DINING HALL



## 2. PICK YOUR EXTERIOR

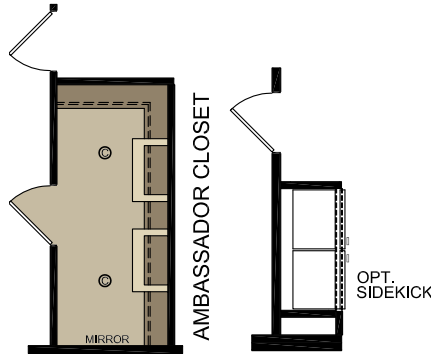
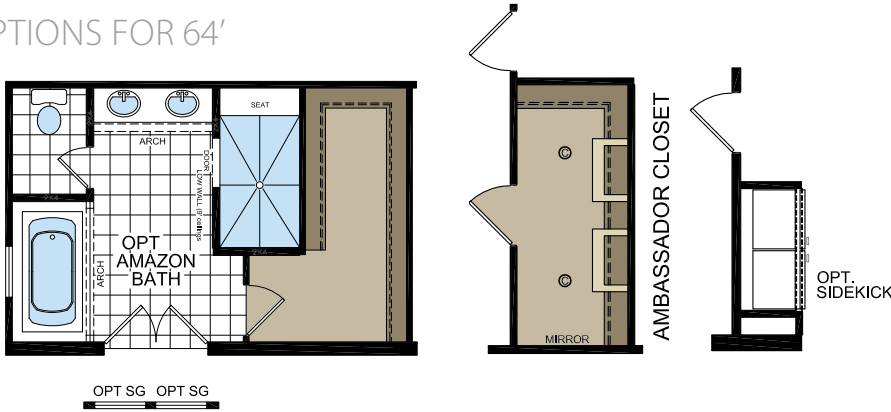
NOTE: 64ft, 68ft, and 76ft versions of this home will have different elevations due to location of windows.



# 3. PICK YOUR OPTIONS

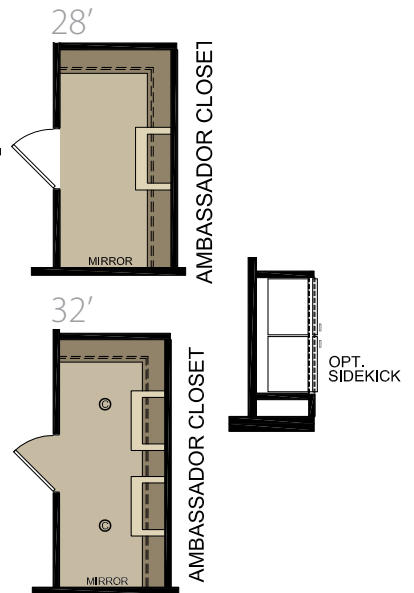
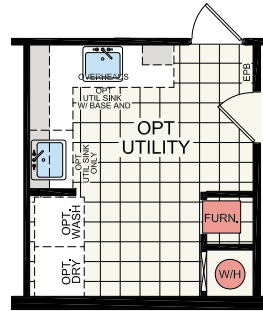
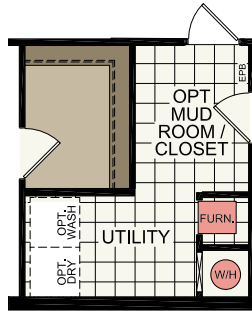
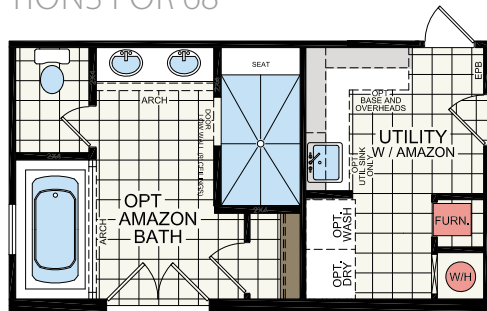
Choose from our many optional features available

## OPTIONS FOR 64'

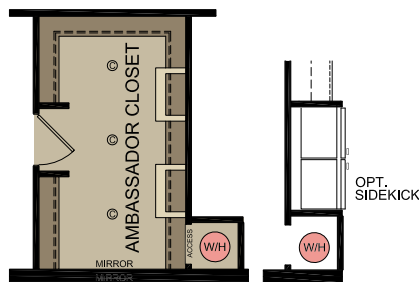
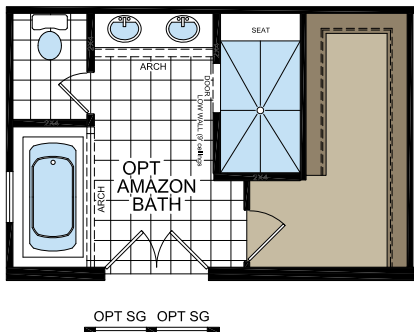


NOT  
AVAILABLE  
IN UK2

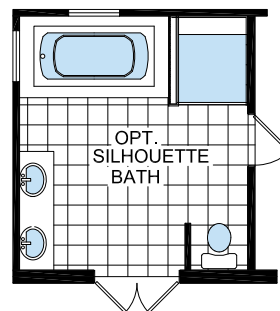
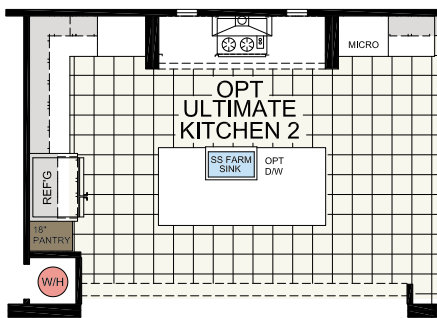
## OPTIONS FOR 68



## OPTIONS FOR 76'



## OPTIONS FOR ALL MODELS





# OPTIONS

Create the home you've always wanted.  
Choose from a wide variety of optional features that will cozy up any room in your home.



Optional Ultimate Kitchen Two



Optional Ultimate Kitchen Two



Optional Amazon Bath

# EXPLORE



It's where the elements of life come together – your kitchen – a place to eat, talk, share, catch up, and entertain friends and family. Ultimate Kitchen Two lets you do it all in style. From modern stainless steel appliances to an ultra-hip farmhouse sink to unique touches like accent lighting – even a convenient USB receptacle for charging your mobile devices – Ultimate Kitchen Two is designed around you.



Stainless Steel  
Whirlpool® Refrigerator



Stainless Steel  
Whirlpool® Built-In Oven



Whirlpool® Smooth Ceramic  
Glass Electric Cooktop



Full Height Ceramic Backsplash  
with Designer Inlay Above Range



Stainless Steel  
Farmhouse Sink



Stainless Steel  
Euro-Style Range Hood

The Ultimate Kitchen Two is available on select models. The actual kitchen layout will vary by floor plan. Décor items such as flooring, cabinet finishes, countertop materials and ceramic tile backsplash will vary by region.



Stainless Steel  
Whirlpool® Dishwasher



USB Receptacle



Spacious Pot and Pan Drawers



Shaker-Style Cabinet  
Crown Molding



Elegant Wood Cabinets



Under-Cabinet Lighting



Pot-Filler Faucet



Large Stainless Steel Pulls



Fluted Glass Door Inserts



Gooseneck Kitchen Faucet



Ample Lighting Throughout



Small Appliance  
Convenience Center



CHAMPION®

MANUFACTURED BEAUTIFULLY™

4055 US 401 South

Lillington, NC 27546

800-428-9182

www.atlantichomesnc.com

## CHATEAU COLLECTION STANDARDS

## COMPETITOR

7-year Warranty

X

☐

Dormer

X

☐

50 Gallon Water Heater

X

☐

22 cu.ft. side by side Refrigerator

X

☐

Dishwasher

X

☐

Black River Rock Ent. Center w/ 2 LED Lights & 1 incon Jack

X

☐

Black River Rock Accent on Foyer Wall (if applicable) & Island

X

☐

Archways over Range Area & Between Living Room & Kitchen

X

☐

LED Can Lights in Kitchen, Dining Room, Master Bedroom, & Master Bath

X

☐

Palladium Window in Dining Room or Patio

X

☐

Pot & Pan Drawers

X

☐

3-1/2" Crown Molding Throughout Except Closets

X

☐

Black Farm Sink with Single Lever Metal Faucet

X

☐

1/2" Dry Wall with Rounded Corners throughout Except Closets

X

☐

Stainless Steel or Black Venetian Rangehood

X

☐

1 Row of 4" x 8" Ceramic Backsplash or 2 Rows of 3" x 6" Glass Backsplash Throughout

X

☐

Whole House Water Shutoff

X

☐

Ceramic 36" x 28" or Glass 36" x 27" Behind Range

X

☐

*Please contact your Authorized Champion Retailer for standard specifications.*