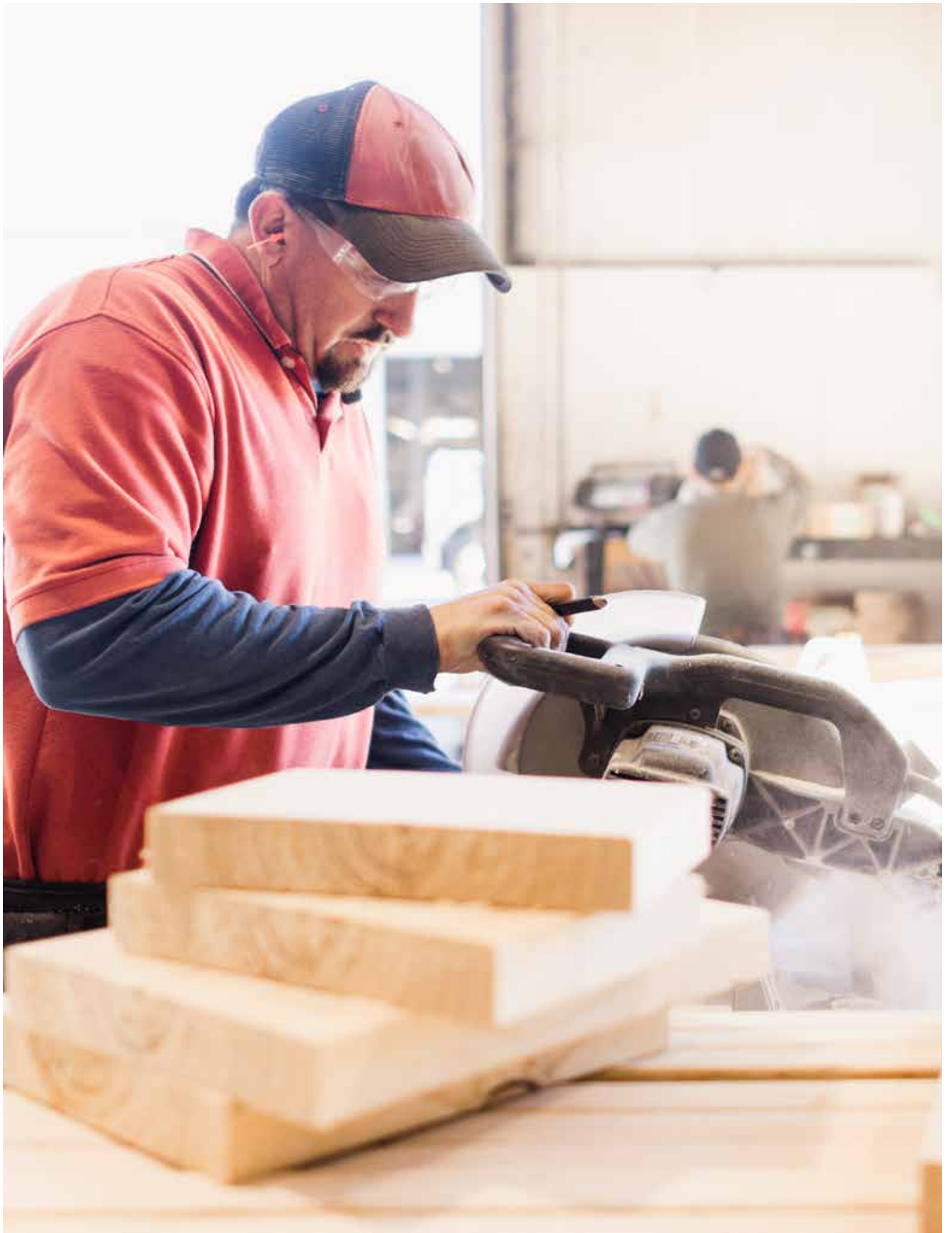


# MODULAR



ATLANTIC<sup>®</sup>  
HOMES



# MADE FOR LIVING

## **A heritage of excellence.**

Atlantic Homes has been providing families with quality homes for generations. With a unique combination of state-of-the-art manufacturing and high-quality building materials, we provide the highest value in housing. We have earned our reputation by consistently delivering more than our customers might expect. More innovative quality features. More home styles. More flexible floor plan designs. More helpful customer service. And, most of all, more home for the money.

## **For you. For life.**

Beyond just building you a house, we're committed to providing you and your family with a home to make memories in that will last a lifetime. Somewhere you can feel secure. A place you can call your own. A home that fits your lifestyle and has your own personal touch. Whether you're an active young family constantly on the go or empty-nesters ready to simplify, just relax – we have a home that's right for you.

## **Lifestyle. Choice.**

Our vast selection of floor plans and color options give you the freedom to express your personal style and fit your home around your life. Using our online Kitchen Designer, it's easy to create the kitchen of your dreams.

# 2748-01

## PINE VIEW

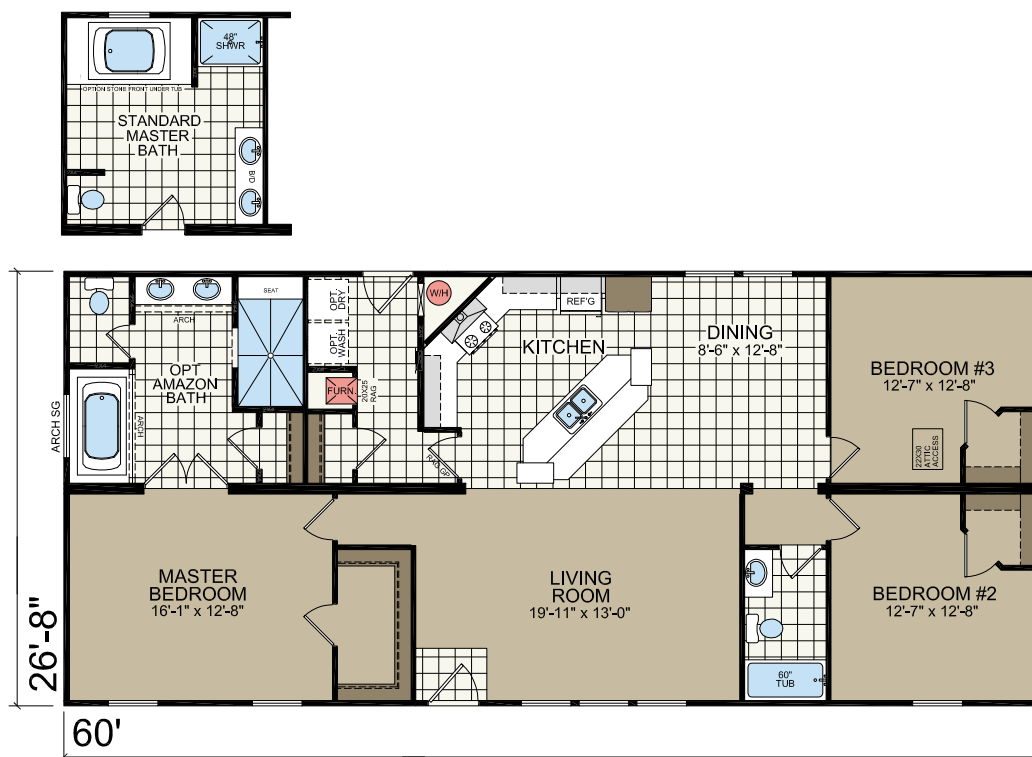
28' x 48'  
3 bed-2 bath  
1280 sq. ft.



# 2860-06

## GARDEN COTTAGE

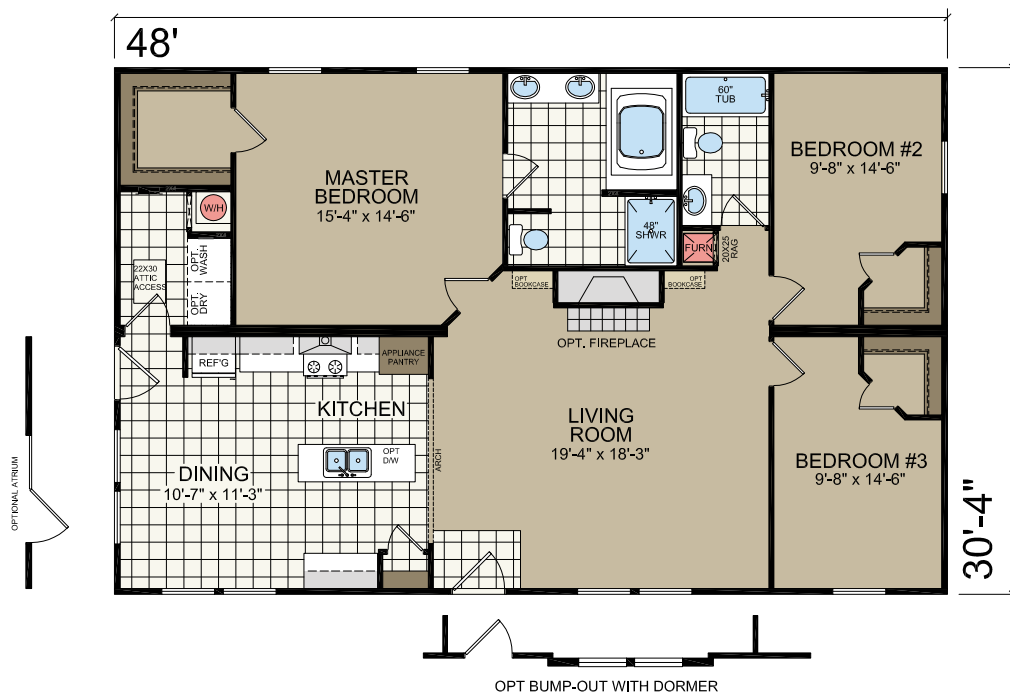
28' x 60'  
3 bed-2 bath  
1600 sq. ft.



# 3248-02

## CORNER COTTAGE

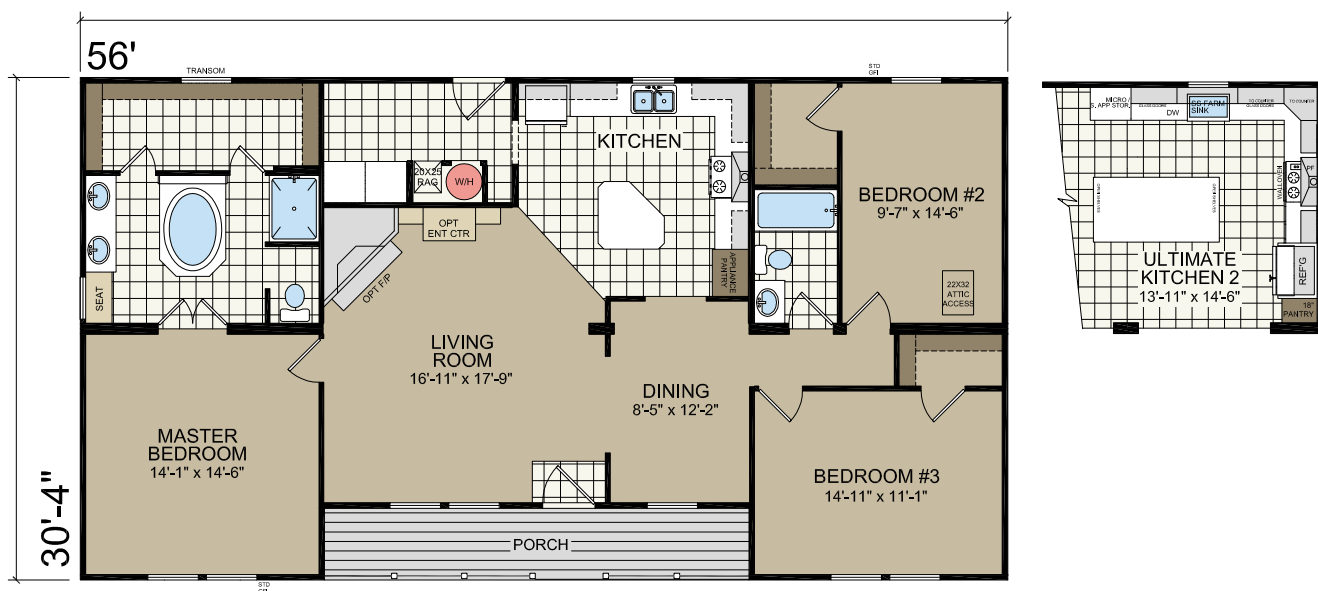
32' x 48'  
3 bed-2 bath  
1455 sq. ft.



# 3256

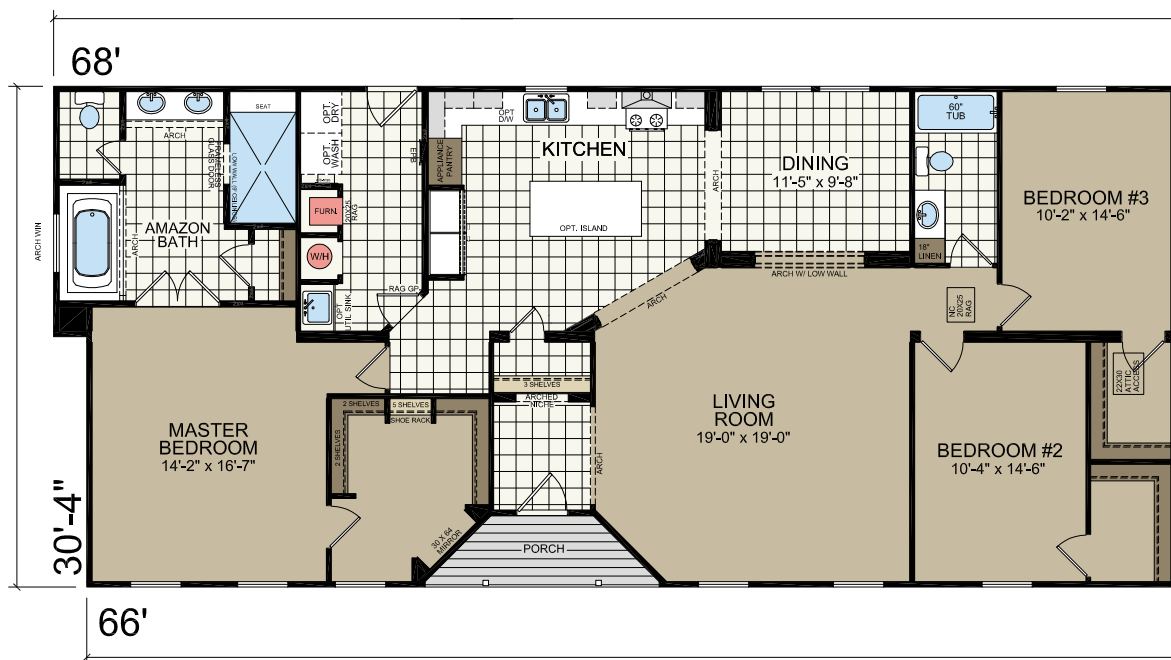
## WACCAMAW

32' x 56'  
3 bed-2 bath  
1698 sq. ft.

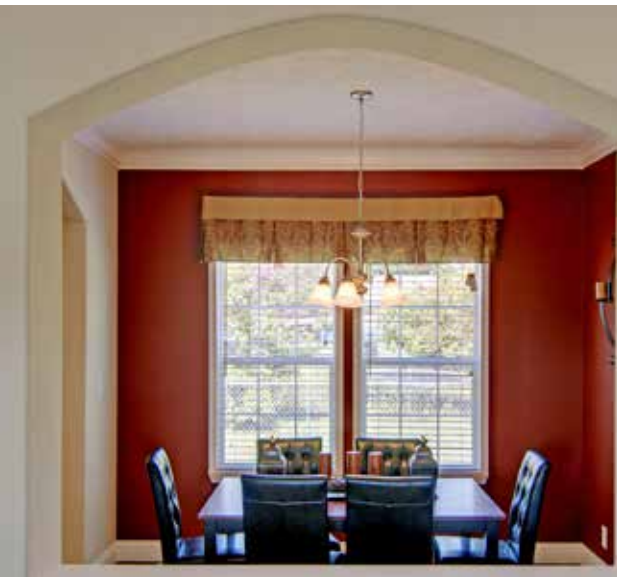


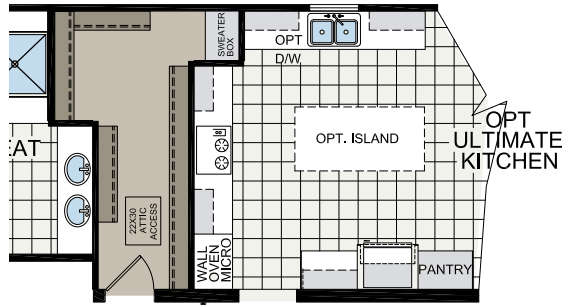
3266-01  
ARCHDALE

**32' x 68'**  
**3 bed-2 bath**  
**1986 sq. ft.**



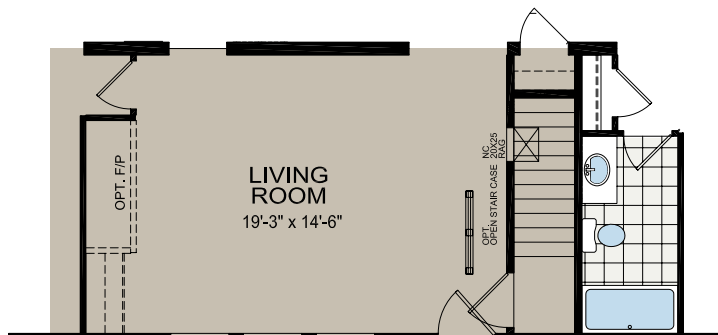
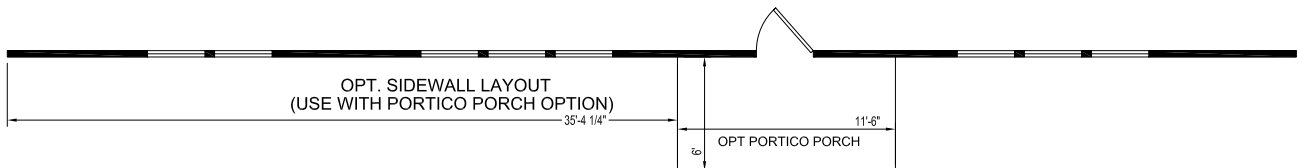
3266-01  
ARCHDALE





UITE RETREAT BATHROOM

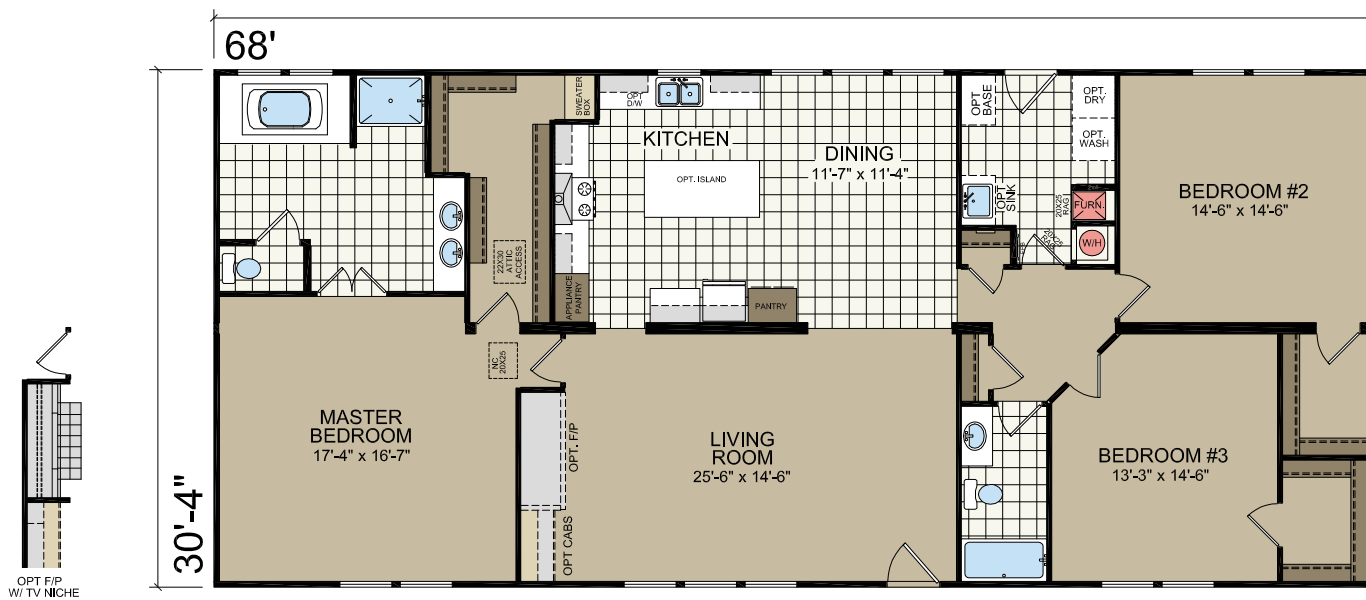
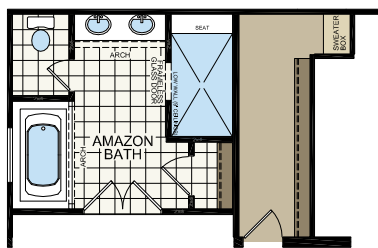
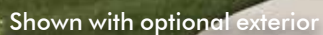
68'



OPTIONAL STAIRWELL FOR CAPE COD

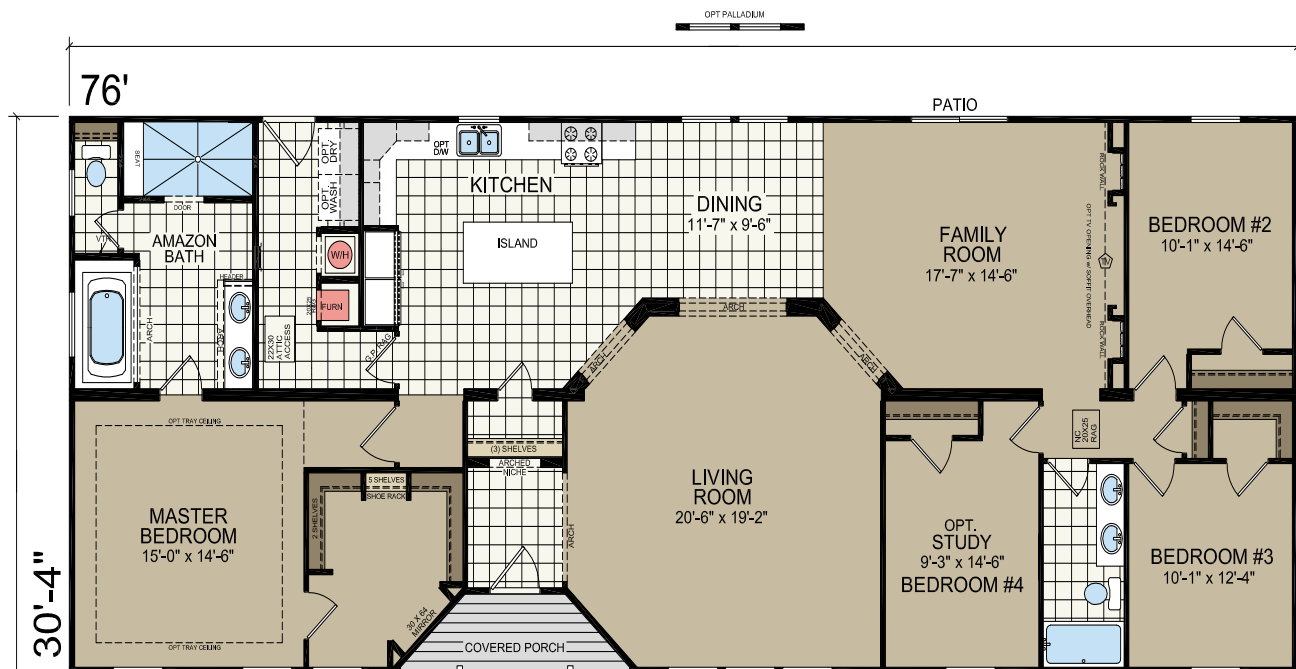
## FARM MANOR

**2062 sq. ft.**



TRYON

Shown with optional exterior



3276-05  
TRYON



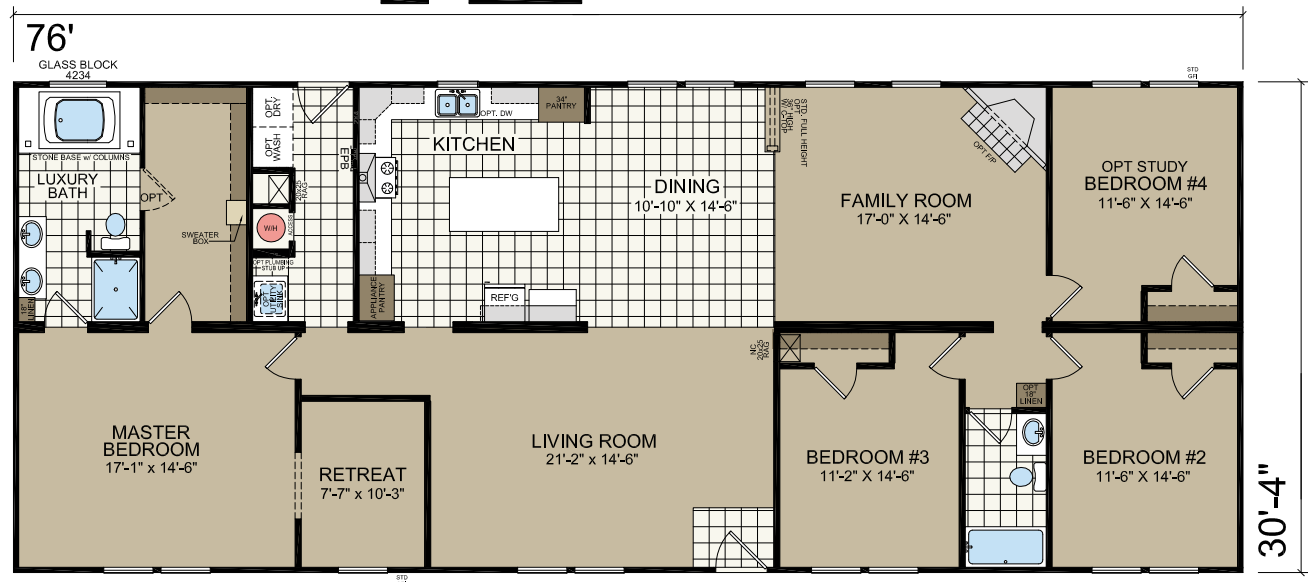
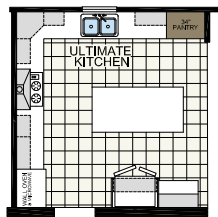
# 3276-07

PARENTS RETREAT

32' x 76'  
4 bed-2 bath  
2305 sq. ft.



Shown with optional exterior



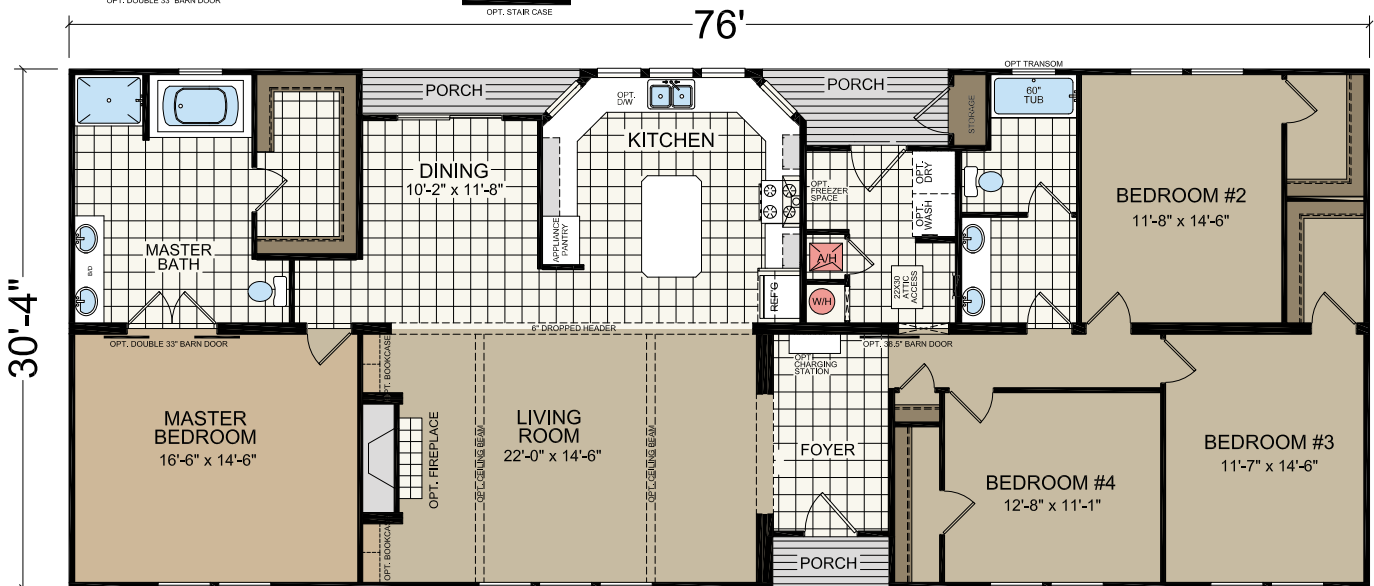
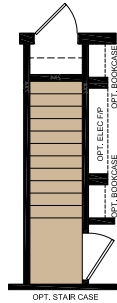
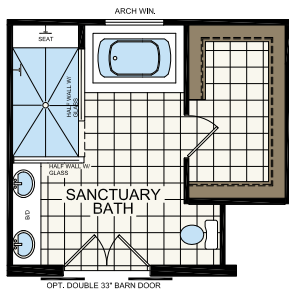
# 3276-11

## LAKEVIEW

32' x 76'  
4 bed-2 bath  
2212 sq. ft.



Shown with optional exterior



## COUNTRY ESTATE

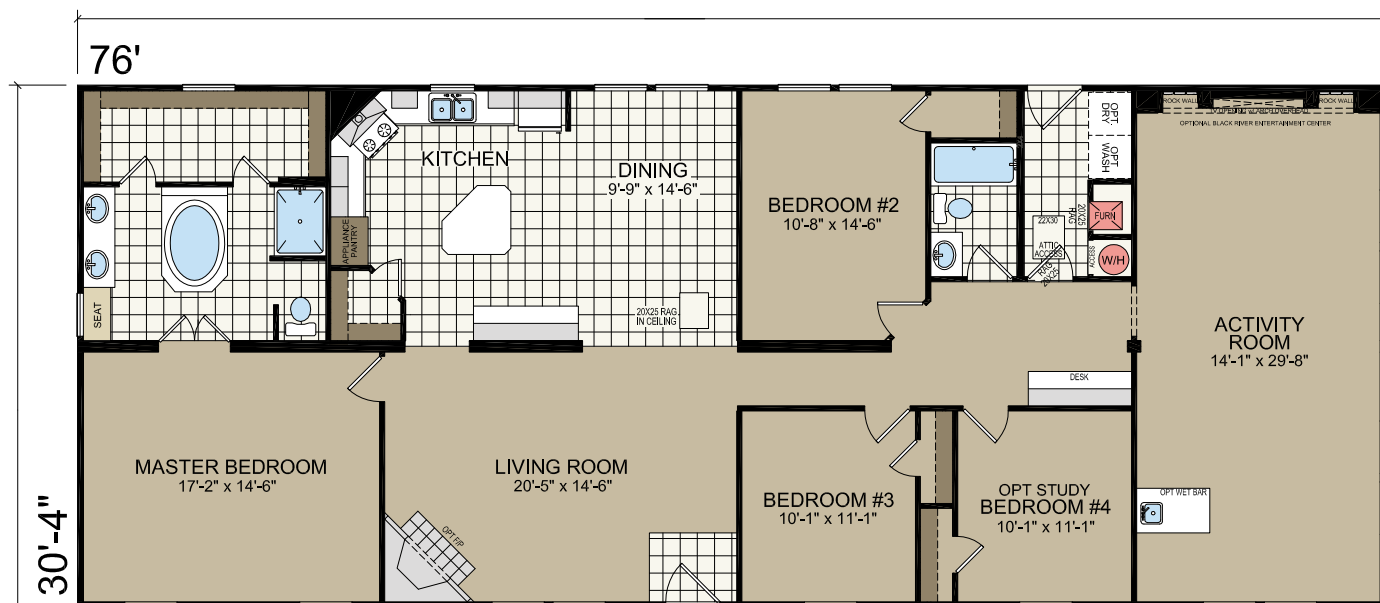
**2080 sq. ft.**

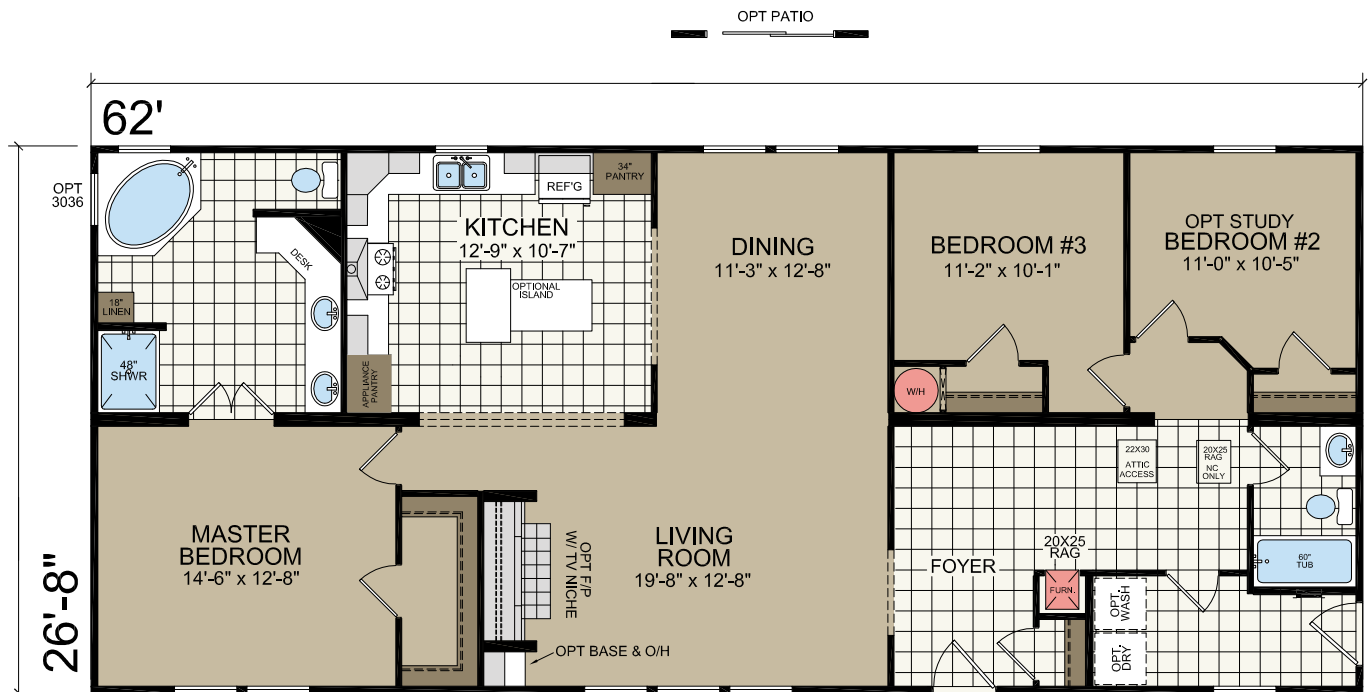




**76' x 26'**  
**4 bed-2 bath**  
**2305 sq. ft.**

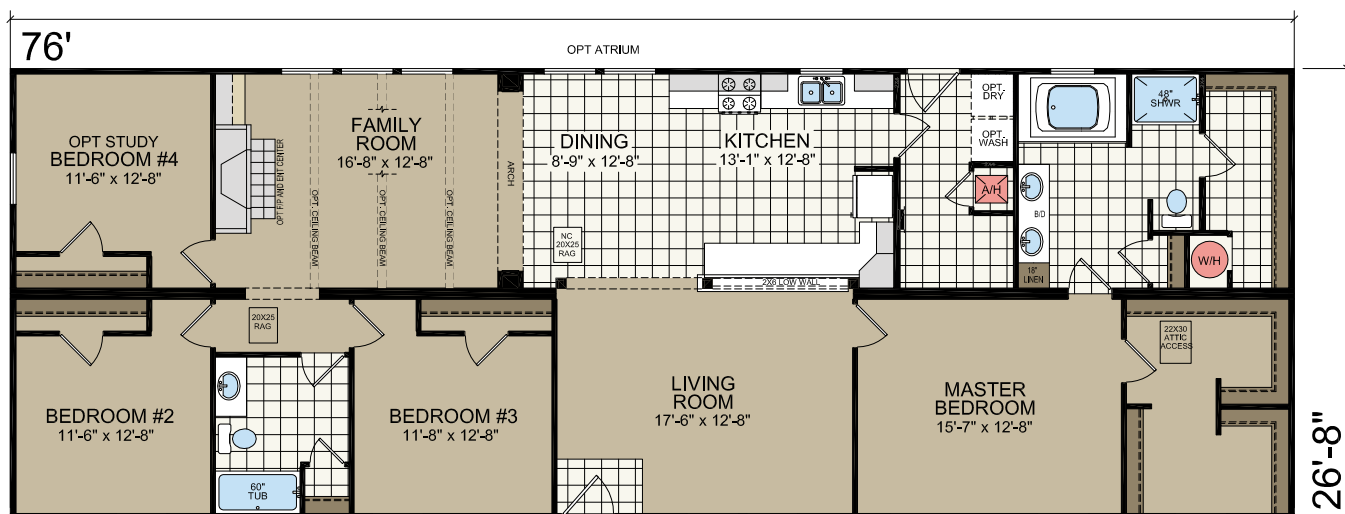
**76' x 26'**  
**4 bed-2 bath**  
**2305 sq. ft.**





CHEROKEE

**2027 sq. ft.**



# STANDARD FEATURES

## CONSTRUCTION

Off Frame Construction (Unless On Frame Option is Selected)

100 MPH Construction

R-30 Ceiling Insulation

R-13 Wall Insulation

R-22 Floor Insulation

7/16" OSB Exterior Structural Wall Sheathing

7/16" OSB Roof Sheathing

2x10 Framed Series Floor Joists 16" OC - Off Frame

2x4 Exterior Walls 16" OC

2x3, 24" OC Interior Studs Throughout

2x4, 16" OC Double Mate Line

8' Flat Ceilings - All Models

19/32" T&G OSB Floor Decking

5/12 Modular Trusses, 24" OC (Except Full Triple Sections)

Blown Ceiling Texture

Nominal 12" Overhangs

## PLUMBING AND HEATING

Electric Furnace, Air Handler or Returns Per Print (No Trunkline)

Perimeter Heat Registers Per Print

50 Gallon Electric Water Heater

PEX Water Supply Lines

Whole House Shut-Off Valve (In Washer Box)

Water Shut-Off Valves at All Toilets & Sinks

Plumb & Wire for Washer & Dryer

## ELECTRICAL

Total Electric & 200 AMP Service

40 Space Panel Box

Light Fixtures at All Exterior Doors

Exterior GFI Electrical Receptacles – (Approved locations per print)

GFI Receptacles in Kitchen and Baths

8 Wire Thermostat

Dual Bulb Glass Ceiling Lights (T/O except Walk in Closets)

## EXTERIOR

Double 5 Vinyl Siding

30 Year Architectural Fiberglass Shingles

Low E Vinyl Windows w/ Grids & Sills

38x82 Fiberglass Front Door w/ Dead Bolt (No Storm)

38x82 9-Lite Rear Door w/ Dead Bolt (No Storm)

Raised Panel Shutters (Front Door Side)

Fiber Cement Fascia

## CABINETS

Champion 42" Box Cabinets w/ 2 Adjustable Shelves

3/4" MDF Stiles w/ Pocket Screw Construction

Wide Cabinet Doors - Where Available

3/8" Beare Board Side Panels w/ Luan Overlay

Cabinet Above Refrigerator

Lined Base & Overhead Cabinets

Coffee Cherry Flat Panel Cabinet Doors w/ 2-Hole Pulls

Concealed Cabinet Door Hinges (Soft Close)

Matching Toe-Kicks in Kitchens (Same as Cabinet Color)

1/2 Center & Finished Bottom Shelf in Base Cabinets

Cabinet Crown Molding

Drawers Over Doors in Kitchen Base Cabinets

Furniture Style Vanities

Laminate Countertops & Edging in Kitchen and Baths

Dual Sinks in Glamour Baths (most models)

Bank of Drawers - Master Bath (per plan)

Ceramic (x1 Row of 4"x8") OR Glass (x2 Rows of 3"x6") Backsplash T/O

Ceramic (36" W x 28" H) OR Glass (36" W x 27" H) Wall Behind Range

Appliance Pantry w/ Receptacle (Where Available)

## KITCHEN & BATHS

Stainless Steel Kitchen Sink w/ Brushed Nickel Single Lever Metal

Faucet/Vintage Vanity Mirrors

Fiberglass Tubs/Showers (per print) w/ Metal Faucets

48" 1 pc Showers with Pivot Door (Unless Otherwise Noted)

Vanity Lights Above Each Sink (2 bulb)

Porcelain Sinks w/ Single Lever Metal Faucets

Platform Tub w/ Metal Filler in Glamour Baths (per print)

## INTERIOR

1/2" Finished Sheetrock w/ Square Corners T/O Including Closets

3 5/8" Crown Throughout (White Painted)

2 1/4" Door/Window Molding Throughout (White Painted)

3 1/4" Baseboard Throughout (White Painted)

Flat Cove Molding in All Non-Walk-in Closets

2" Blinds Throughout

Vented Wire Shelving in Closets & Over Washer/Dryer Areas

White 2-Panel Interior Doors

Brushed Nickel Door Knobs & (3) Morrisette Hinges

## FLOOR COVERING

Rebond Carpet Pad

Simply Stated Carpet by Shaw® w/ Carpet Bar

"Congoleum Diamondflor®" No Wax Vinyl Flooring

"Congoleum Diamondflor®" Tile Foyer Entry

## APPLIANCES

Stainless Venetian Range Hood

Black 18 cu ft Frost-Free Refrigerator (w/ Ice)

Black 30" Free Standing Electric Range

# ATLANTIC<sup>®</sup> HOMES

4055 US 401 S  
Lillington, NC 27546

[atlantichomesnc.com](http://atlantichomesnc.com)

CHAMPION<sup>®</sup>

MANUFACTURED BEAUTIFULLY<sup>™</sup>